



ej

ejco.com
Made in USA

Innovative Access Solutions



Table of Contents

Features and Options 4-6

Benefits of Hinged Manhole Assemblies 9

Innovative Access Solutions

Section	Category	Description	Page
Overview	Introduction		3
	Features and Options	Optimized Designs	4
		Ease of Use	5
		Safety and Security	6
Innovative Product Lines	Benefits of Hinged Manhole Assemblies	ERGO® Access Assembly	10
		ERGO® XL Access Assembly	12
	Captive Hinge Access Assembly	14	
	HINGECO® Access Assembly	15	
	VERSACAM™ Security Lock	16	
	Explosion Mitigation Manhole Solution	17	
	SELFLEVEL® Asphalt Access Assembly	18	
	SELFLEVEL® Concrete Access Assembly	20	
	SELFLEVEL® Valve Box Top	22	
	REVOLUTION® Access Assembly	23	
	Ductile Iron Hinged Hatch Access Assembly	24	
	Hinged Trench Assembly	26	
	STORMSURGE® Access Assembly	28	
	DUOSEAL® Watertight Access Assembly	29	
	CAMPRESSION® Access Assembly	30	
	Composite Access Solutions	31	
	Hinged Grate Assembly with Slam Lock	32	
ERMATIC® Modular Covers	33		

Opens with less than 35 lb of lifting force. With the mechanical strut, products like the ductile iron hinged hatch can be opened with minimal effort.

Watertight access assembly can withstand 51.45 psi, which is the equivalent of having approximately 118 ft of water on top of the manhole assembly.

All sales by EJ USA, Inc. are subject to and governed by the EJ USA, Inc. Terms and Conditions of Sale, which can be located at ejco.com/ustc and are hereby incorporated into this catalog by reference.

CAMPRESSION, EON LOCK, EPIC, ERGO, ERMATIC, DUOSEAL, DUROSTREET, DUROWALK, HINGECO, INFRA-RISER, MPIC, REVOLUTION, SAFE HATCH, SELFLEVEL, STORMSURGE, and VERSACAM are registered trademarks of EJ Group, Inc. ERMATIC is made in France.

1883
Made in USA

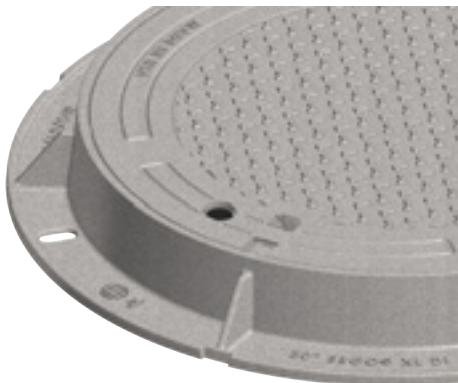
Meets American Iron and Steel (AIS) requirements. Please contact your sales representative for Buy America or Build America, Buy America Act (BABAA) requirements prior to ordering.



We create exceptional solutions.

Worldwide research and collaboration gives EJ the edge in creating the best infrastructure solutions—solutions that lead the industry, act as best-in-class benchmarks, and satisfy the most demanding customer expectations.

With a focus on safety, functionality, and ergonomics, the design teams at EJ present our Innovative Access Solutions.



Optimized Designs

Rethinking access designs to make products with the right balance of strength, weight, and durability.



Ease of Use

Each product is designed to improve the installation process and enhance the ease of access to critical underground infrastructure—with a blend of ergonomics and functionality.



Safety and Security

The safety of workers and pedestrians is the top priority of the innovative line. You will see this with designs that minimize the potential for injury and keep structures secured.

Optimized Designs

Years ago, castings were overbuilt to handle the inconsistencies of molding and iron quality. Now, with more controlled manufacturing processes and a better understanding of design practices, these antiquated designs can be updated.

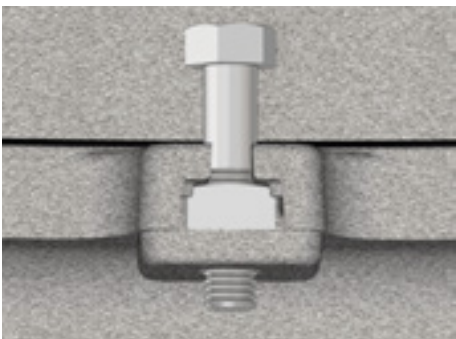
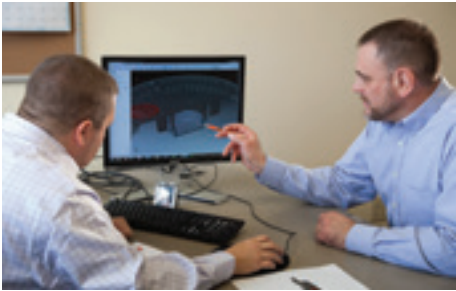
Our modern castings provide superior performance with reduced weight, saving energy and raw material.

Benefits

- Load ratings that exceed AASHTO M 306 proof load testing
- Reduced weight for ergonomic benefits
- Improved product functionality
- Added strength and durability
- Less raw material usage — a green product
- Interchangeability with your existing street castings



Stackable frames improve safety and conserve space during storage, in transit, and when handling.



EON LOCK® Bolting

EJ has developed a reliable, hassle-free way to ensure solid, long lasting security.

U.S. Patent 7,712,515



Ribbed modern cover design for ductile iron



Platen modern cover design for gray iron



Thinner wall thickness and stronger cover seating

Recessed region in flange design can reduce material and weight

Modern frame designs offer improved performance and safety. They are lighter weight and withstand higher load ratings.

Ease of Use

Whether it is an access point you need to get into daily, or only on an occasional basis, ease of entry to the chamber is key for authorized personnel.

Our designs incorporate features that improve reliability and ergonomics to make use simple and reduce effort.

Benefits

- Ergonomically engineered to minimize effort and reduce strain
- Intuitive operation that requires minimal training
- Multiple handling options that can accommodate your existing tools



Mechanical Strut

Mechanical strut greatly reduces the effort required to open the cover. For example, a 550 lb cover can be opened using less than 35 lb of force at the handle. The fully contained, corrosion-resistant stainless steel strut takes up minimal space and is superior to exposed spring lift assist systems.



Hinged Covers and Hatches

Ranging from standard manholes to large hatches, EJ offers a wide range of solutions to fit your application's proof load and usage needs (see page 9 for benefits of hinged cover designs).

U.S. Patent 7,908,798

EPIC® Pick Bar

EPIC pick bar solution improves stability and increases leverage in this patented, closed hole design.

U.S. Patent 7,905,679

MULTILEAF™ Hinged Covers

To withstand heavy loads, large openings typically required heavy covers. Innovations from EJ, such as the MULTILEAF, use a multi-cover design to distribute the weight between several covers, making opening the large cover area much easier while retaining strength.

Safety and Security

Personal safety for all of our customers and employees is imperative. We incorporate safe practices into every process, product and service we provide—from design and manufacture, through distribution and end use.

Adding to safety is security. Infrastructure security is a concern for all government entities both large and small. EJ offers different levels of infrastructure security. In most cases, the simplest security is appropriate, however the end user has several innovative options.

Benefits

- Intuitive safety features and options that provide physical and visual barriers to protect both workers and the public
- Wide range of security options to protect against accidental opening or closing and prevent unauthorized access or removal



Safety Grate

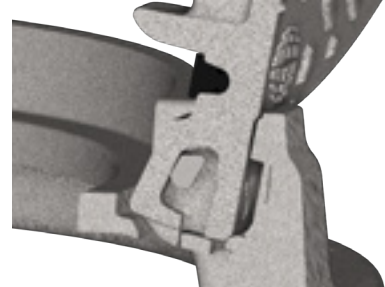
Designed for fall through protection, safety grates offer access for visual inspections and limited maintenance while the safety grate is in place. When in the open position, the safety orange aluminum grates create a visual barrier around the pit. Safety grates can also be locked to prevent unauthorized entry.



Safety Bar

Self-engaging safety bar locks into place when the cover is fully opened and prevents accidental closure. The safety bar easily lifts up and out of the locking position, allowing the cover to close.

U.S. Patent 8,449,216



Safety Catch

Offered in our hinged manhole covers, the safety catch design helps prevent unintended closure. The design also allows for the cover to be removed and opened to angles greater than 90°, providing clear access to the structure below.

U.S. Patent 7,908,798



ADA Compliance

Provides safe walking and biking surfaces and equal access for all modes of transportation.



Learn more at
ejco.com/worker-safety



Missing and stolen covers are dangerous to pedestrians and motorists. Make sure they are properly secured against the hazards in their environment.



Cam Bolting

Available on the CAMPRESSION® series, the arrangement of cam bolting locks applies pressure to the cover and gasket for a tight seal. The design does not require the bolt to be removed to open the cover. Simply loosen the bolt enough to rotate the cam to the open position to remove the cover. Cam bolting eliminates loose and missing fasteners.

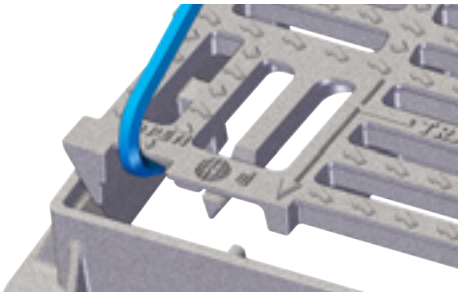
Other Bolting Options



Standard Bolting—
The simplest way to secure covers or grates to the appropriate frame. Standard hex bolts or cap screws are the most common.

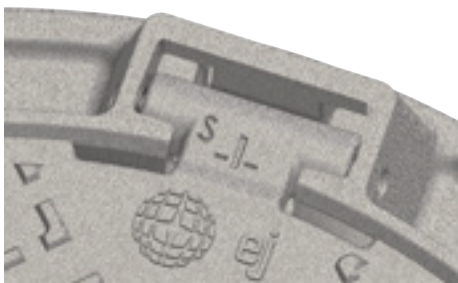


Penta Head Bolting—
Provides a bit more security over standard bolting. Penta head bolts are substituted for the standard hex head style. Tools for penta head bolts are commonly available.



Slam Lock

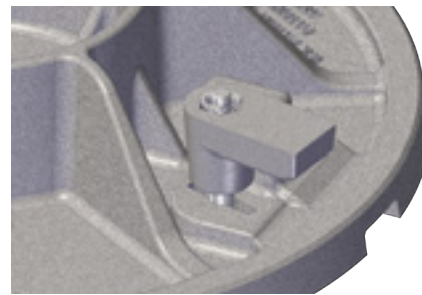
The self engaging slam lock feature automatically locks the cover/grate to the frame when closed. To the untrained eye, the unlocking technique for the slam lock is not easily recognizable. With a standard pry bar, the latch releases when the pry bar is applied to the right location.



Captive Hinge

Using a theft resistant hinge pin permanently secures the cover to the frame. This patented feature is referred to as our Captive Hinge design.

U.S. Patent 8,057,123



Cam or Keyed Locks

The cam lock provides improved security to frame and cover assemblies, while eliminating loose and missing fasteners. EJ offers various cam and lock options to fit your needs (underside view shown).



Tamper Proof Bolting—
These type of bolts are used for situations that require special security above standard and penta head bolting. Tools required for removal are not as common.

Innovative Product Lines



Benefits of Hinged Manhole Assemblies

Functionality

- Ergonomics—Cover easily opens for access. Also works great in situations where a cover can't be dragged out of the way due to space restrictions or the elevation of the access point.
- Time Savings—For secured covers, users don't have to spend time moving/finding the right cover orientation on the frame to re-bolt the cover.

Safety









- Resting Open Cover—Hinge design allows cover to rest in an upright and open position for clear access.
- Safety Catch—Safety catch helps prevent the cover from inadvertently closing.

Security

- One-Point Security—Connecting one side to the frame via the hinge, only one security option is needed to secure the cover, simplifying locking/unlocking the structure during service.
- Range of Security Options—Standard bolting can keep the cover secured to the frame. Upgrading locks and special security bolting can deter theft.
- Additional Security Options—See page 14 for more information.

EJ offers a wide range of hinged manhole solutions. Please use this table below for highlights and comparisons between our hinged manhole product lines.

Hinged Manhole Assembly Comparison

Product	ERGO® ACCESS ASSEMBLY	ERGO® XL ACCESS ASSEMBLY	CAPTIVE HINGE	HINGECO® ACCESS ASSEMBLY
				
Clear Opening	24" and 28"	30" and 36"	24"	24"
Frame Height	4" (for 24" clear opening) 6" (for 24" clear opening) 7" (for 24" clear opening) 7" (for 28" clear opening)	4 1/2" (for 30" clear opening) 5 1/2" (for 30" clear opening) 6" (for 36" clear opening)	4"	4" bottom flange—round 4" bottom flange—square 6" top flange
Hinge Detail				
Top Flange Available	—	—	—	Yes
Lift Assist Available	—	Yes	—	—
Grate Available	Yes	Yes (30")	Yes	—
Security Options	Cam lock, bolts	Cam lock, bolts	Captive hinge pin, cam lock, bolts	Slam lock
Standard Iron Type	Ductile iron cover Gray iron frame	Ductile iron cover Gray iron frame	Ductile iron cover Ductile iron frame	Ductile iron cover Ductile iron frame
Load Rating	Heavy duty	Heavy duty, airport extra heavy duty (30" only)	Heavy duty	Heavy duty†

†HINGECO is suggested for unintended vehicular traffic rated applications.

ERGO® ACCESS ASSEMBLY

The ERGO® access assembly has been designed with ergonomics in mind to optimize worker safety by incorporating a hinge feature.

The cover opens to 120°, where the cover securely rests and can be removed. The safety catch at 90° prevents accidental closure.

The ERGO access assembly is customizable to most city specifications with multiple frame openings and heights available. For clear openings greater than 28", please refer to the ERGO XL access assembly.



ERGO access assembly.

Standard Features

- Heavy duty
- Gasketed
- Patented hinge assembly
- Opens to and removes at 120°
- Safety catch at 90°
- Ductile iron cover
- MPIC® multi-tool pick bar
- Made in the USA

Options

- Available on SELFLEVEL®
- Special lettered covers
- Custom logo covers
- Environmental messaging
- Grates available
- Cam lock security
- VERSACAM™
- EON LOCK® bolting
- Watertight (L1)*
- Multiple frame openings and heights available (see table)



Showing 24" ERGO with cam lock



Drainage grate available for 24" ERGO

ERGO Access Assembly Sizes

Clear Opening	Frame Height	Series No.
24	4	ERGO24
24	6	ERGO24
24	7	ERGO24
28	7	ERGO28

Note: All dimensions are in inches.



Learn more about this product at ejco.com/ergo

Important Safety Information

Complete removal of the cover is recommended when entering the access point.

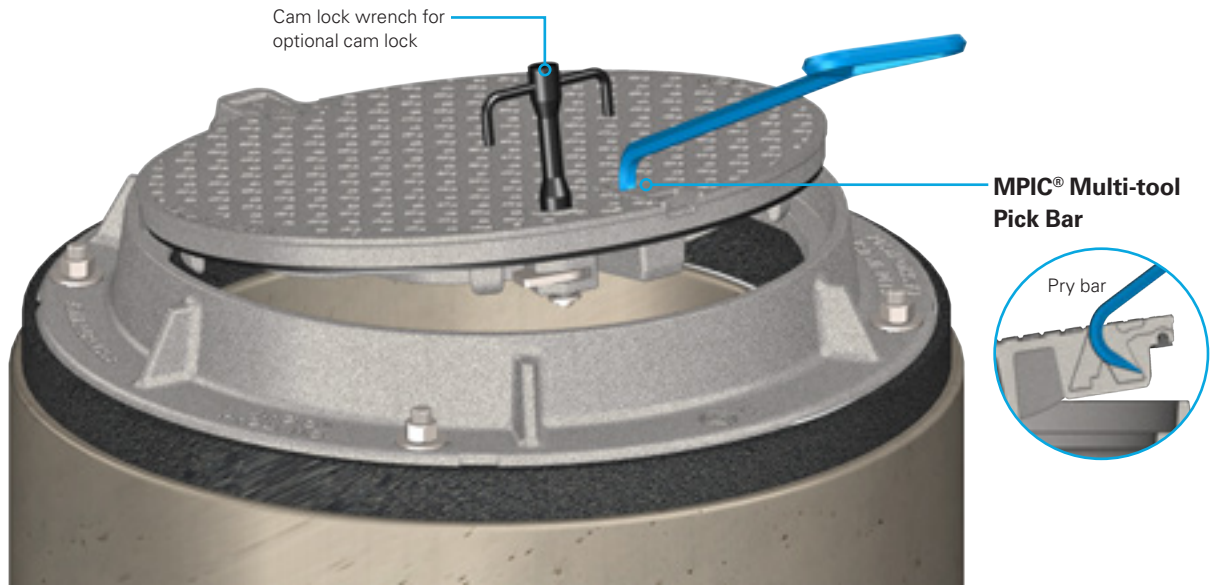
*Incidental water only (no pressure or head rating)
Bolted cover, no cam lock, beaded gasket, and non-draining hinge pocket frame assembly required.



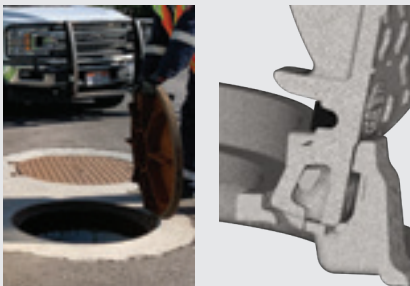
VERSACAM® Security Lock

A simple and robust approach for heightened security

See page 16 for more information.

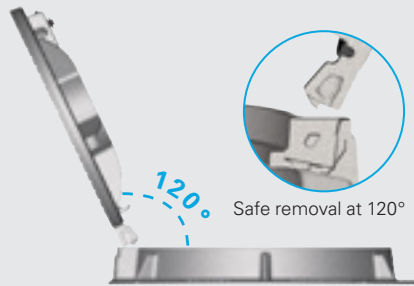


Safety Catch



Patented ERGO hinge design has a safety catch at 90° to prevent accidental closure.

Safe Cover Removal



The patented hinge design allows the cover to open up to 120°, where it rests in a safe and secure position. From the 120° position, the cover can be safely removed. U.S. Patent 7,908,798

MPIC® Multi-tool Pick Bar

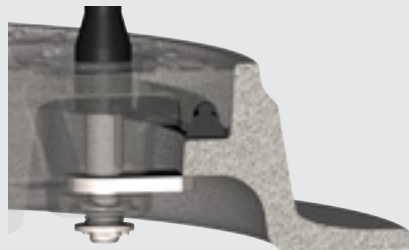


T-Gasket

The thick and durable gasket cushions traffic shock and resists infiltration.



Cam Lock Security Option



The cam lock provides improved security to frame and cover assemblies, and also eliminates loose and missing fasteners. The cam lock wrench is only removable when the cover is in the locked position, ensuring it is engaged.



Custom logo cover made from a photo of Mt. Edgecumbe, by local photographer Tim Shobe, for the City of Sitka, Alaska.

ERGO® XL ACCESS ASSEMBLY

The ERGO® XL access assembly offers an advanced level of functionality and safety for 28" clear openings and above.

This product is easy to lift open, reduces excess strain, and promotes safe working conditions. To address ease of use, choose an optional stainless steel mechanical strut that reduces the lifting force to raise the cover to less than 50 lb.

Standard Features

- Heavy duty
- Gasketed
- Patented hinge assembly
- Opens to 120°
- Safety catch and removal at 90°
- Ductile iron cover
- MPIC® multi-tool pick bar
- Made in the USA

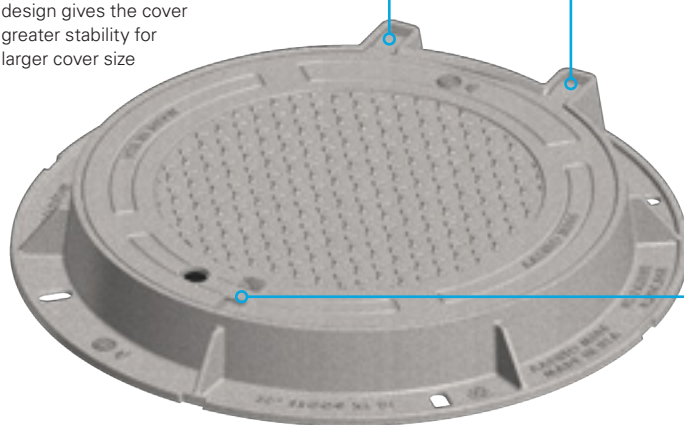
Options

- Airport extra heavy duty
- Special lettered covers
- Custom logo covers
- Environmental messaging
- Grates available
- Cam lock security
- VERSACAM™
- EON LOCK® bolting
- Watertight (L1)*
- Lift assist
- Multiple frame openings, heights, and top flange available (see table)

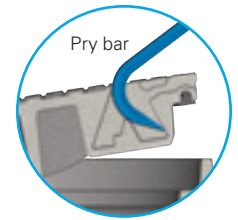


ERGO XL adds convenience to 30" and 36" access assemblies.

Patented dual hinge design gives the cover greater stability for larger cover size



MPIC® Multi-tool Pick Bar



Learn more about this product at ejco.com/ergo-xl

ERGO XL Access Assembly Sizes

Clear Opening	Frame Height	Series No.
30	4 1/2	ERGO30
30	5 1/2	ERGO30
36	6	ERGO36

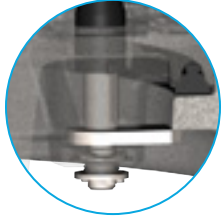
Note: All dimensions are in inches.

Important Safety Information

Complete removal of the cover is recommended when entering the access point.

*Incidental water only (no pressure or head rating)
Bolted cover, no cam lock, beaded gasket, and non-draining hinge pocket frame assembly required.

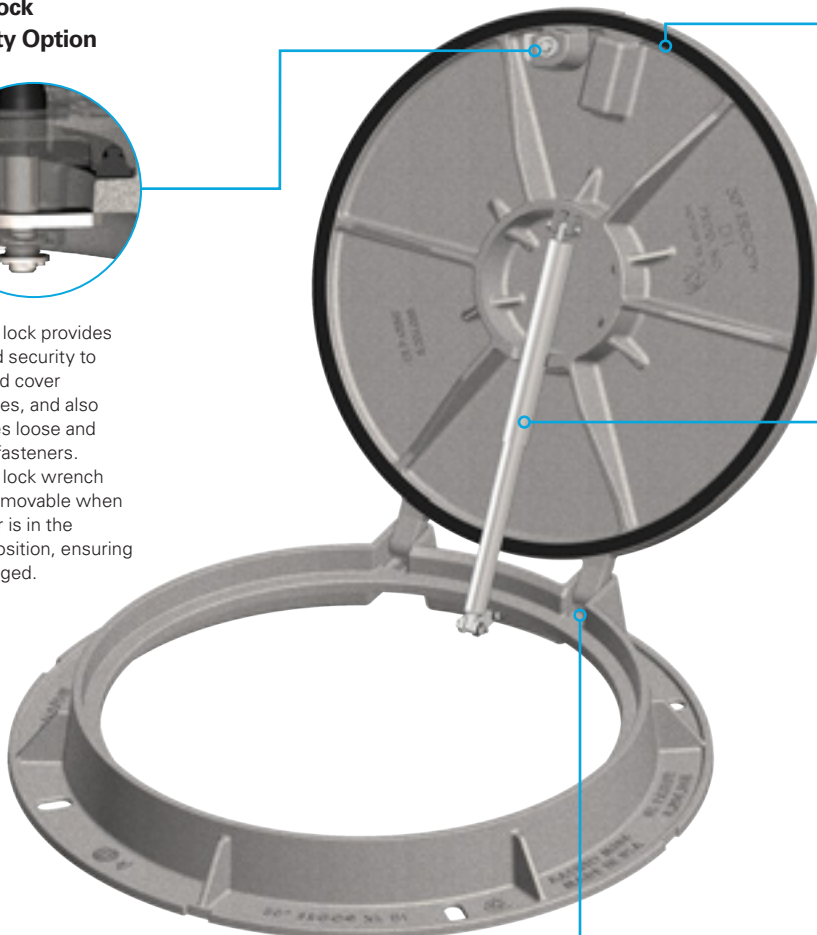
Cam Lock Security Option



The cam lock provides improved security to frame and cover assemblies, and also eliminates loose and missing fasteners. The cam lock wrench is only removable when the cover is in the locked position, ensuring it is engaged.

T-Gasket

The thick and durable gasket cushions traffic shock and resists infiltration.



Lift Assist

Optional lift assist is a corrosion-resistant stainless steel mechanical spring strut that reduces the lifting force of the cover to less than 50 lb. It is available only on the ERGO® XL.

Mechanical Strut Lift Assist

The rugged design is clean and maintenance free. The strut takes up less space in the clear opening than a traditional spring assist. It is made without internal gases or seals and is fully self-contained, protecting coils from exposure to the elements.

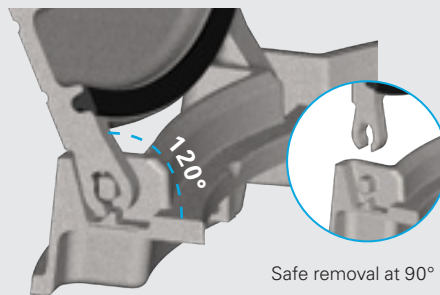


VERSACAM® Security Lock

A simple and robust approach for heightened security

See page 16 for more information.

Opening Range and Safe Cover Removal



Our patented dual hinge design allows the cover to open up to 120°, where it rests in a safe and secure position. From the 90° position, the cover can be safely removed.

U.S. Patent 8,206,058



CAPTIVE HINGE ACCESS ASSEMBLY

The Captive Hinge access assembly is an advanced solution that addresses present concerns in the market such as cover theft, ergonomics, safety, and security. Once a cover with a captive hinge pin is installed, the cover cannot be removed.

Standard Features

- Heavy duty
- Gasketed
- Opens to 120°
- Safety catch at 90°
- Ductile iron frame and cover
- MPIC® multi-tool pick bar
- Patented hinge assembly
- Non-slip surface
- Made in the USA

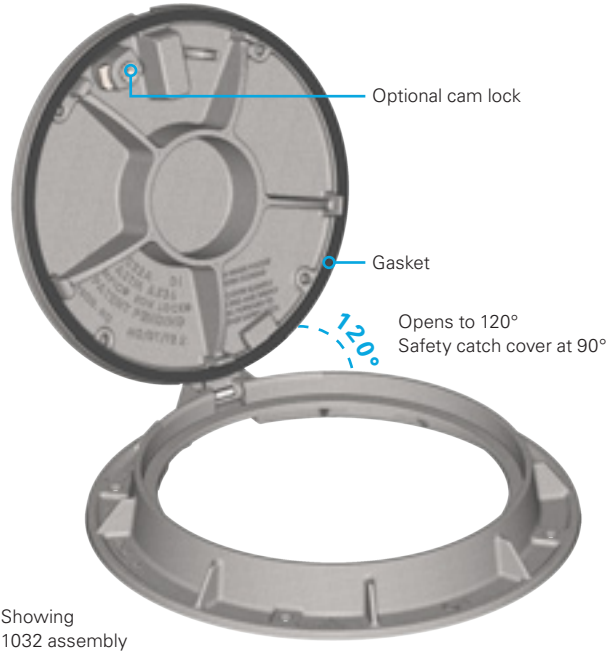
Options

- Drainage grates
- Special lettered covers
- Custom logos
- Environmental messaging
- Wireless remote monitoring
- Security — Cam lock, bolting
- VERSACAM™ security
- Multiple frame openings and frame heights available
- Captive hinge optional pin makes cover non-removable



Important Safety Information

If used without an installed pin, complete removal of the cover is recommended when entering the access point.

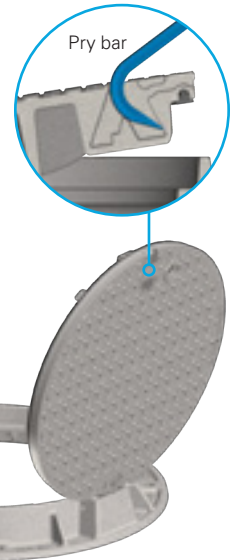


Showing 1032 assembly

Safety and Security

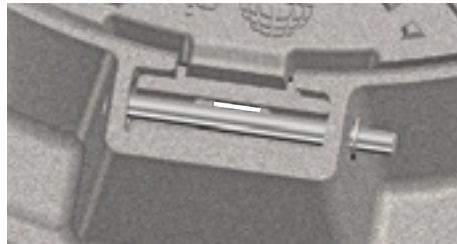
Integrated safety feature holds the cover open at 90°. Optional bolting and cam locks.

MPIC® Multi-tool Pick Bar



Theft Resistant Hinge Pin

The end user has the option to permanently connect the cover to the frame to prevent cover theft. A cover can be made captive before delivery or after installation.

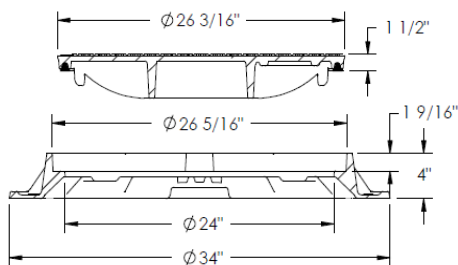


Option 1—Preinstalled (cutaway view shown)
Captive hinge pin installed during manufacturing by EJ.



Option 2—Retrofit (cutaway view shown)
The retrofitting captive hinge pin can be installed anytime if a preinstalled pin hasn't been used. The pin comes with a spring built within the pin, which sets during installation to permanently secure the hinge to the frame.

Note: The Captive Hinge pin is not a requirement for the hinging function of this product.



Optional drainage grate with cam lock

HINGECO® ACCESS ASSEMBLY

Combine ergonomics and security with the HINGECO® access assembly.

The design of this cover allows it to pivot on the hinge and holds it at 120° to provide unobstructed access to the clear opening of the frame. In combination with the slam lock, there is no need for multiple cam locks to secure the cover. One slam lock keeps the cover secured and can be unlocked with a standard pry bar.

Precasting the HINGECO access assembly is made easy with the top flange version. By casting the assembly upside down, getting a smooth, flat surface is simplified during the pouring process.

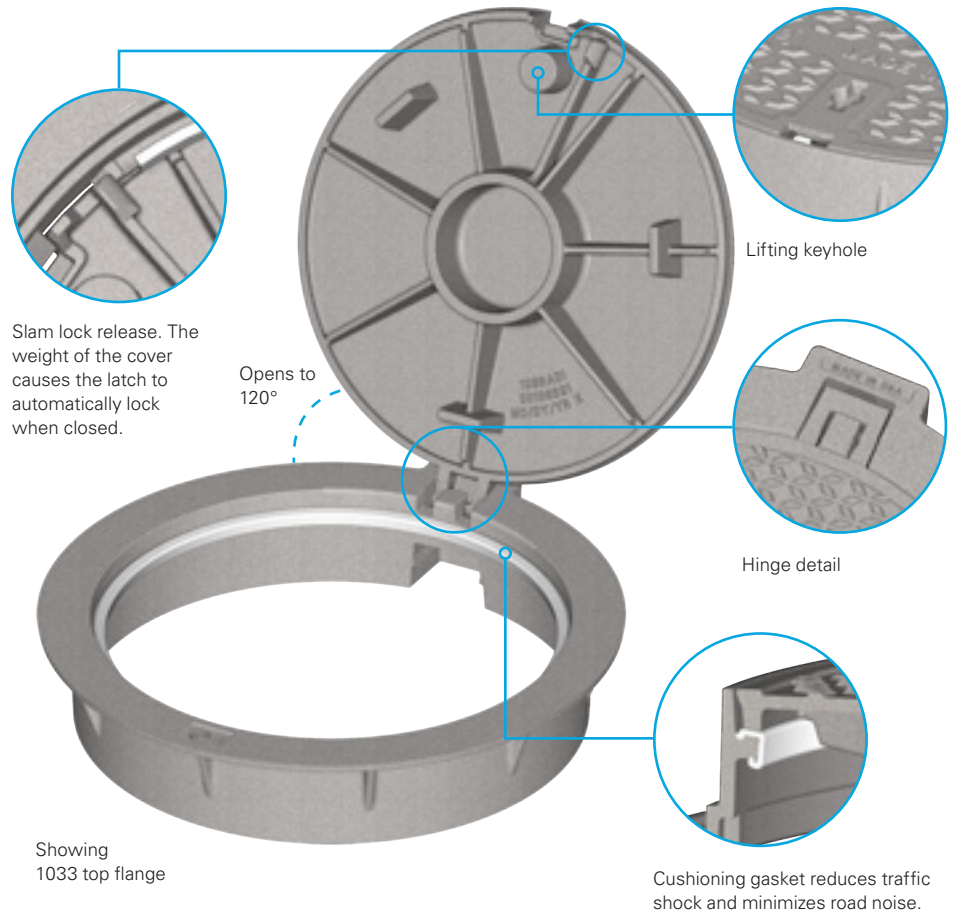
Standard Features

- Heavy duty
- Ductile iron frames and covers
- Proof load exceeds AASHTO M 306 40,000 lb requirement
- Hinged cover opens to 120°
- Cover locks in 90° open position, must be lifted to be released
- Cover removes at 90°
- Slam lock release feature, which automatically locks when closed
- Made in the USA

Options

- Round or square frames
- Special lettered and custom logo covers
- Cushioning gasket on bearing surfaces
- Lift handle
- Top flange available

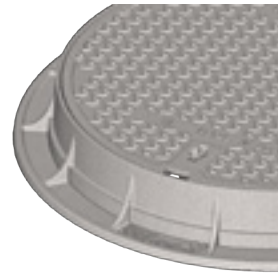
Note: HINGECO is traffic rated, but not intended for continuous traffic applications.



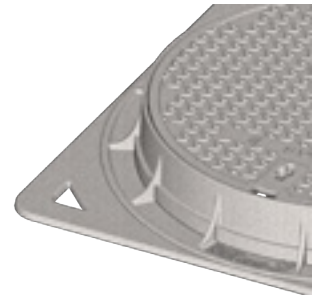
Frame Options



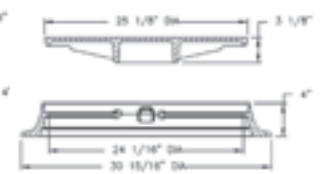
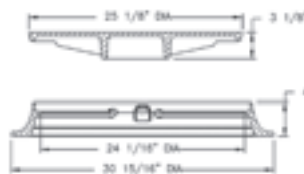
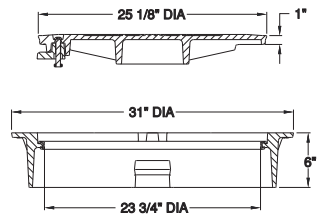
1033 top flange



1033 bottom flange



1034 bottom flange



Important Safety Information

Complete removal of the cover is recommended when entering the access point.

VERSACAM™ SECURITY LOCK

The VERSACAM security lock is a simple and robust approach for heightened security. The hidden mechanism is constructed with minimal moving parts and auto-engages upon closing the cover. It can be used on a variety of access solutions, including the ability to retrofit with existing frame installations.

Heightened Security - An optional bolt (standard or security) can be used on an added layer of security. Additionally, if the bolt is not re-installed in the field, the lock will still function.

- The VERSACAM security lock is designed to last for years to come in the field with its durable components.
- With just a few simple steps, the VERSACAM security lock is securely opened or closed. To unlock, remove the cap and optional bolt (if utilized). Insert the key and lift up to disengage the lock. The cover is opened using a standard manhole hook. Remove the key. To lock the unit, simply return the cover to the seated position and the lock will automatically engage.

Standard Features

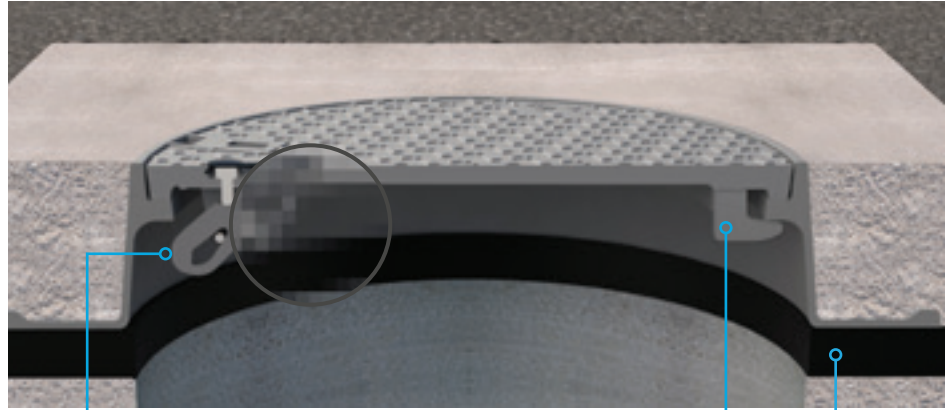
- Robust auto-engaging lock
- Fits a variety of access covers
- Threaded bolt hole for optional bolting (standard or security)
- Made in the USA

Product Application

The VERSACAM security lock can be added to a variety of frame and cover combinations including different seat thicknesses and wall configurations.

- Hinged covers, such as the ERGO® and ERGO XL® access assemblies
- Non-hinged covers, such as the 1040 access assembly
- Composite access assemblies
- Fabricated products, such as aluminum access hatches
- Retrofit with existing frame installations

Note: Images are intentionally blurred to obscure operating mechanism of security lock. Please contact your local sales representative for additional information.



The VERSACAM security lock is a great alternative to a standard cam lock because it automatically engages when closed.

A hook lug is used on non-hinge units.

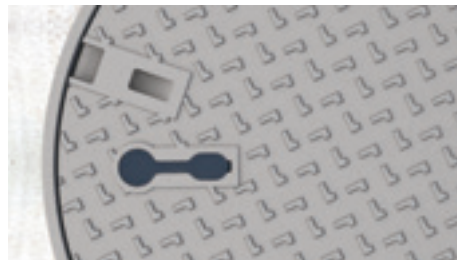
Optional INFRARISER® rubber composite adjustment riser.



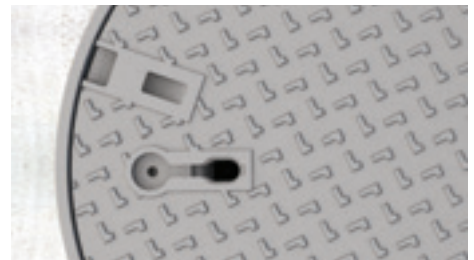
VERSACAM security lock in the locked position with the cap and optional security bolt in place.



VERSACAM security lock after the cap and optional security bolt are removed.



Illustrating the cap in place in the locked position.



Once the cap is removed, the locking mechanism remains concealed.



The SELFLEVEL® access assembly requires two VERSACAM security locks and security bolts.



The VERSACAM security lock can be used on hinged units such as the ERGO or ERGO XL access assemblies instead of a traditional cam lock.



Learn more about this product at ejco.com/versacam

Important Safety Information

Complete removal of the cover is recommended when entering the access point.

EXPLOSION MITIGATION MANHOLE SOLUTION

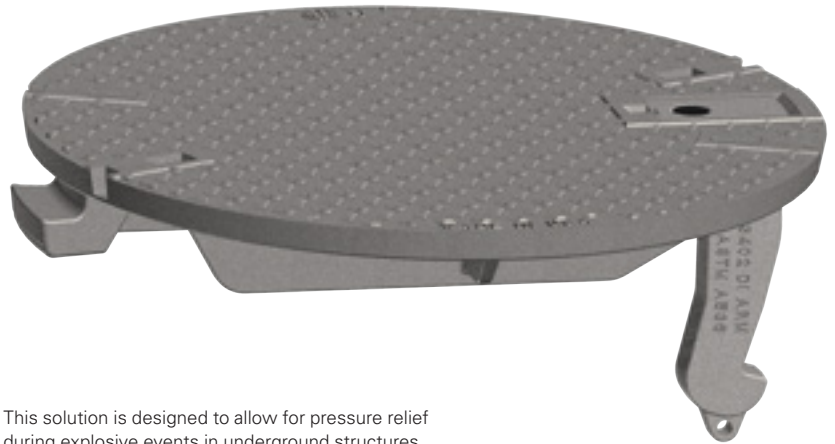
Electrical or gas explosions inside an underground vault can happen without warning. In these situations, a standard, unrestrained manhole cover can become a dangerous projectile. This unit is designed to relieve built up pressure while restraining the cover during an explosive event and then return to the seated position.

Standard Features

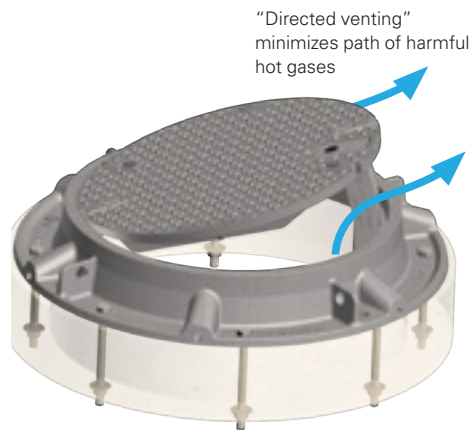
- Light weight ductile iron cover
- Heavy duty H-25 load application
- Exceeds AASHTO M306-10 requirements
- Can be used in a retrofit application
- Ergonomic slide rails for easy removal
- Machined seat
- Cast-in bolt holes for securing frame to structure
- Maximum pressure release is only limited by the area of the frame's clear opening
- Available in sizes ranging from 20" to 40" clear opening – other sizes available upon request

Options

- Security bolt for controlled access and theft deterrent
- Custom logo cover
- Special lettered cover
- Frame with angled anchor rods
- Frame with centering ring on bottom
- Vented covers and grated versions available



This solution is designed to allow for pressure relief during explosive events in underground structures.



"Directed venting" minimizes path of harmful hot gases

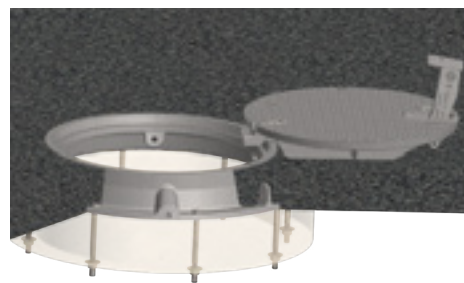


Bottom view

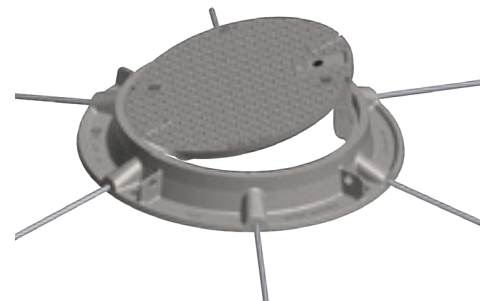
The explosion mitigation manhole solution is designed to allow the cover to tilt when there is an underground explosive event. Shown with anchor bolts.



Explosion Mitigation assembly Louisville, Kentucky.



To open the cover, remove the safety bolt and the removable arm can be used as a handle.



Optional frame with angled anchor rods available

Note: Proper/approved frame must be utilized to ensure functionality. Please contact your local EJ utility representative for additional information.



Learn more about this product at ejco.com/explosion-mitigation

SELFLEVEL® ASPHALT ACCESS ASSEMBLY

The SELFLEVEL® access assembly is a highly engineered infrastructure solution. Unlike traditional manhole units, its unique design allows for a range of movement that keeps the SELFLEVEL access assembly perfectly aligned with the finished road surface. This unit works for both retro fit and new installations.

Standard Features

- Heavy duty
- Upper frame is supported by road surface
- Unit stays level with the road surface, even when road heaves due to extreme temperature changes
- Up to 5° tip angle for top frame
- Proof load exceeds AASHTO M 306 standards
- Frame fits with existing manhole covers
- Made in the USA

Options

- Special lettered covers
- Custom logo covers
- ERGO® SELFLEVEL assembly
- Transitional frame (square base to round top)
- EON LOCK® bolting
- Cam lock
- Neoprene gasket for cover
- Watertight Level 1 (L1)*
- INFRA-RISER® adjustment riser
- Multiple frame openings and heights available



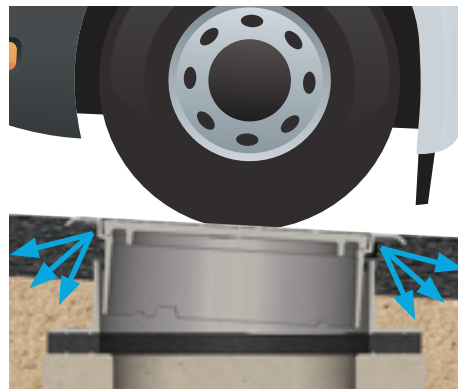
1 year after installation (July 30, 2015)



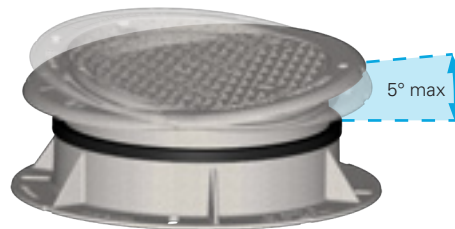
9 years after installation (August 28, 2023)

SELFLEVEL access assembly installed in Traverse City, Michigan.

Range To Move With Surface



Once installed, the unit will continue to move with the road surface. The road surface aids in absorption of traffic vibration and shock, further protecting the life of your infrastructure and critical underground structures.



SELFLEVEL has a range of motion of up to a 5° angle while still moving with surface.

Reduce Surface Movement Issues



SELFLEVEL® Access Assembly Helps Eliminate:

- Frost heave/uplift
- Manhole structure settling
- Site deterioration
- Pavement cracking

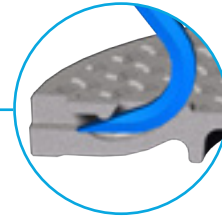
SELFLEVEL® Access Assembly also Provides:

- Improved ride quality to meet smooth street initiatives
- Inclined installations

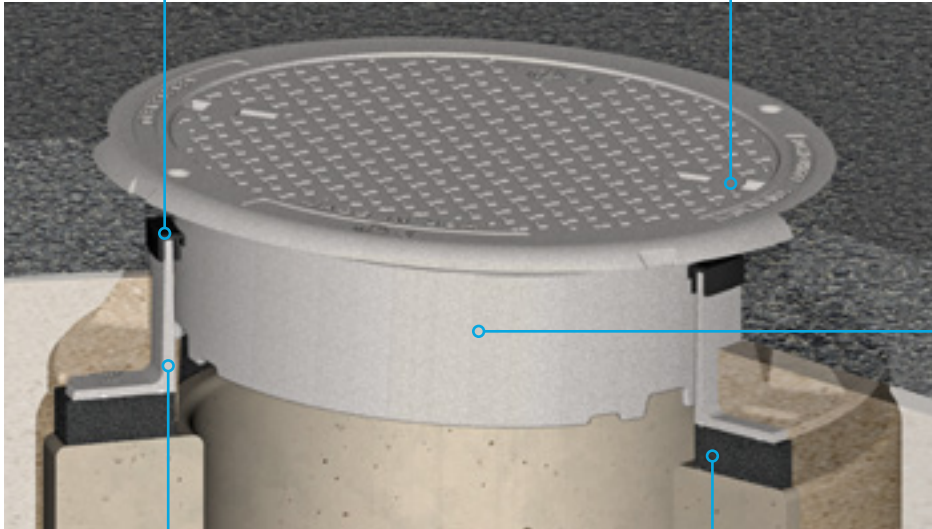
*Incidental water only (no pressure or head rating). Bolted assembly with gasket required.

Multi-functional Seal

The multi-functional seal helps keep the upper frame centered within the guide frame, which prevents the two pieces from touching. Seal protects against excess debris and material from entering the manhole.



EPIC® Pick Bar



Upper Frame

The upper frame of the SELFLEVEL assembly is supported by and moves with the surrounding road surface. This allows it to remain level with the road surface. This "floating" affect helps prevent road damage and protects the infrastructure underground by dispersing traffic vibrations and shock throughout the road surface, rather than into the structure below.

Guide Frame

This frame facilitates self-centering and keeps the upper frame centered over the manhole structure.

Optional INFRA-RISER adjustment riser



After asphalt has been packed, the SELFLEVEL compacts level with the surrounding roadway for a smooth finish that will last longer than traditional manhole assemblies in situations where there can be frost heave and natural road settling.

ERGO® SELFLEVEL® Assembly



ERGO SELFLEVEL for asphalt combines the ergonomic and security benefits of the hinged cover with the roadway leveling benefits of the SELFLEVEL frame.

SELFLEVEL Asphalt Access Assembly Sizes

Cover Size	Clear Opening	Series No.
26	24	1205, 1037, 3024
29 5/8	27 15/16	3028
32	30	1322, 3027

Note: All dimensions are in inches.



Learn more about this product at ejco.com/selflevel

SELFLEVEL® CONCRETE ACCESS ASSEMBLY

The concrete SELFLEVEL® access solution has been designed specifically for concrete applications. By incorporating adjustment brackets into the design, the frame can be held up during the concrete installation. After the concrete cures, the brackets should be removed, and the upper frame will move with the pavement.

This product is ideal for environments with frost heave, as the frame floats with the surface. It also works well for communities with a smooth street initiative, or inclined installations.

Standard Features

- Heavy duty
- Upper frame is supported by road surface, and can be installed with a maximum tip angle of 5°
- Steel sleeve protects the unit (SELFLEVEL) from concrete interference
- Lifting handles on upper frame allow for easier handling during installation
- Lower frame is bolted to structure below
- Proof load exceeds AASHTO M 306 standards
- Frame fits with existing manhole covers
- Made in the USA

Options

- Special lettered covers
- Custom logo covers
- Transitional frame (square base to round top)
- EON LOCK® bolting
- Cam lock
- Neoprene gasket for cover
- Watertight (L1)*
- INFRA-RISER® adjustment riser
- Multiple frame openings and heights available



The SELFLEVEL® access assembly is a highly engineered infrastructure solution. It provides additional benefits that a traditional manhole unit cannot provide. Its unique design allows a range of movement, providing installations that are perfectly aligned with the finished road surface. Showing 3025 assembly.

Reduce Surface Movement Issues

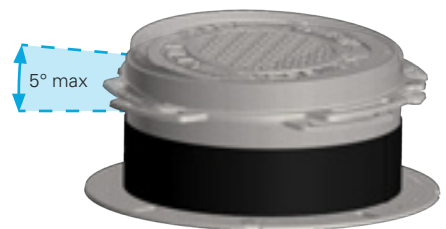


SELFLEVEL® Access Assembly Helps Eliminate:

- Frost heave/uplift
- Manhole structure settling
- Site deterioration
- Pavement cracking

SELFLEVEL® Access Assembly Also Provides:

- Improved ride quality to meet smooth street initiatives
- Inclined installations

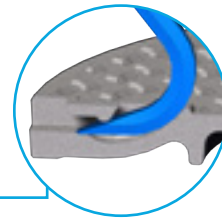


SELFLEVEL has a range of motion of up to a 5° tip angle while still moving with surface.

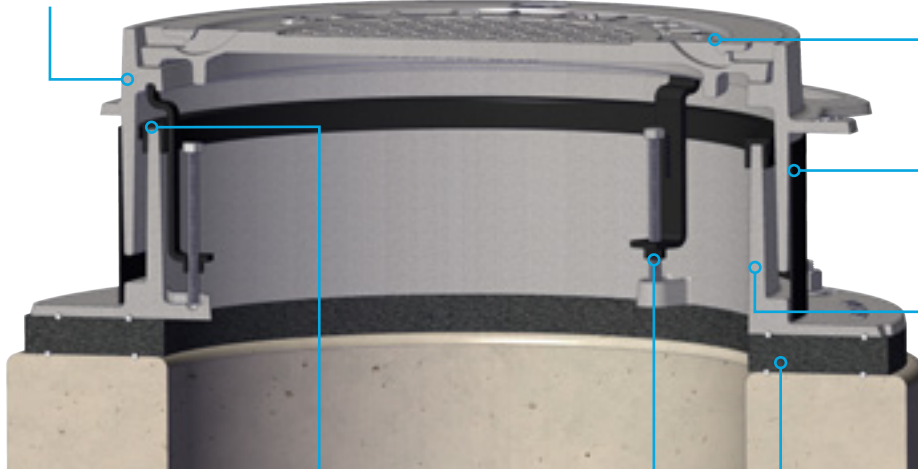
*Incidental water only (no pressure or head rating). Bolted assembly with gasket required.

Upper Frame

The upper frame of the SELFLEVEL assembly is supported by and moves with the surrounding road surface. This allows it to remain level with the road surface. This “floating” effect helps prevent road damage and protects the infrastructure underground by dispersing traffic vibrations and shock throughout the road surface, rather than into the structure below.



EPIC® Pick Bar



Steel Sleeve

Creates a void, while pouring concrete, to allow upper frame to float with the road surface.

Guide Frame

This frame facilitates self-centering. The guide frame comes with a multi-functional seal. It reduces water infiltration and protects against excess debris and material from entering the manhole.

Showing 3025 assembly



Multi-functional Seal

The multi-functional seal helps keep the upper frame centered, which prevents the two pieces from touching.

Optional INFRA-RISER® Rubber Composite Adjustment Riser.



Adjustment Tab and Bracket

Adjustment bracket and bolt for raising the upper frame up off the lower frame during pouring, giving it clearance to ‘float’ when set in concrete. After concrete has cured, the bracket and bolt are removed and can be reused. Adjustment bolt tabs can be cut off for greater clear opening after installation.

SELFLEVEL Concrete Access Assembly Sizes

Cover Size	Clear Opening	Series No.
26	24	3025
32	30	3027

Note: All dimensions are in inches.



Learn more about this product at ejco.com/selflevel-concrete

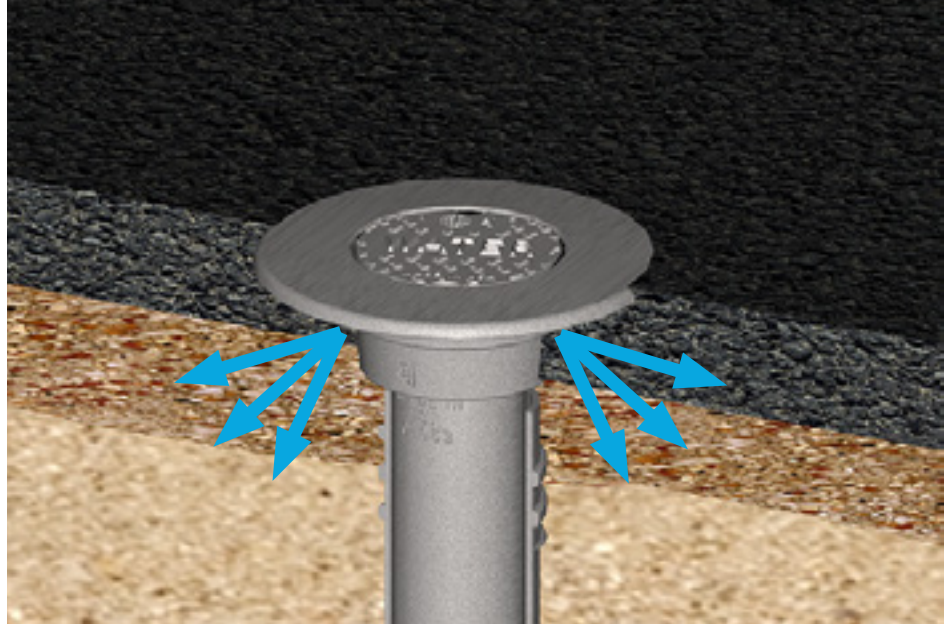
SELFLEVEL® VALVE BOX TOP

Increase driveability and extend road life with SELFLEVEL valve tops. Designed to prolong asphalt life by reducing cracking, and reduce snow plow damage, the SELFLEVEL valve box top is supported by and moves with the surrounding road surface. This allows it to remain flush with the road surface.

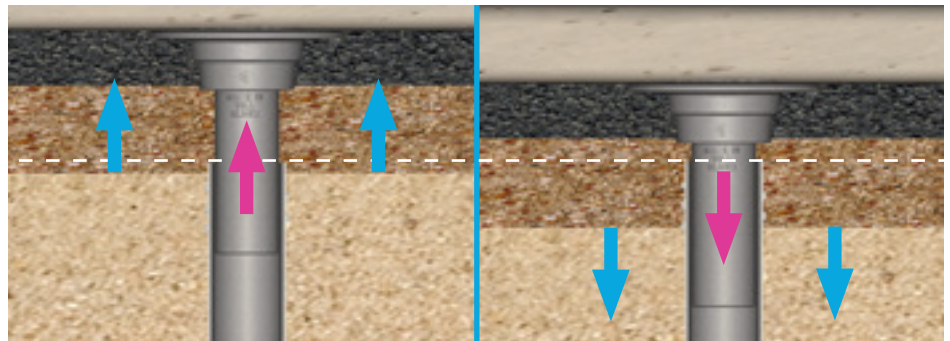
Lasting longer than traditional valve box tops and risers in situations where there can be frost heave and natural road settling, this “floating” affect also helps prevent road damage and protects by dispersing traffic vibrations and shock throughout the road surface.

Standard Features

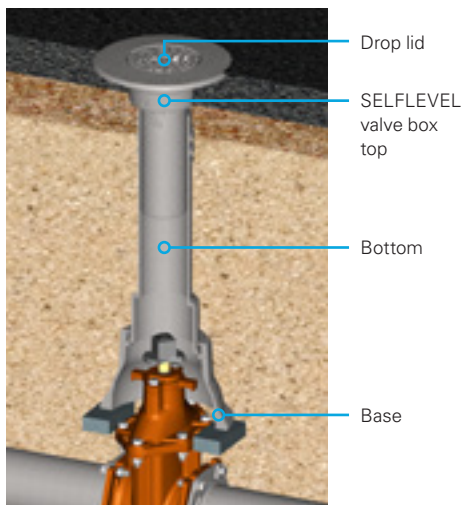
- Heavy duty
- Accommodates 2" through 12" valves
- 4" clear opening
- Frame fits with locking and non-locking 6800 series lids
- ASTM A48, Class 35B
- 85% minimum recycled content
- Made in USA



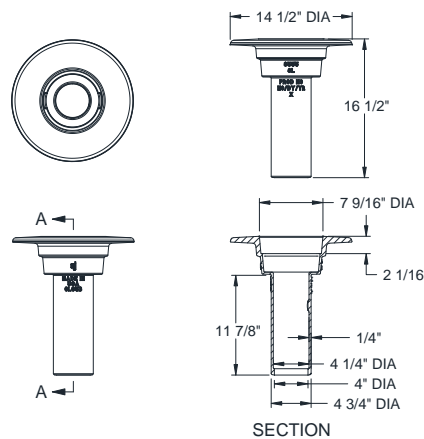
Once installed, the unit will continue to move with the road surface. The road surface aids in absorption of traffic vibration and shock.



The valve box top stays level with the road surface, even when the road heaves due to extreme temperature changes or settling of the pavement. Pavement around the valve box stays smooth for years to come.

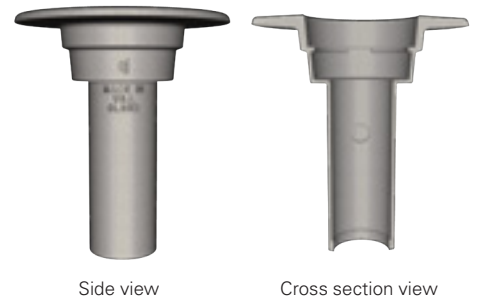


The SELFLEVEL valve box top is used with drop lid, bottom, and base to provide the complete solution for valve box access.



85558008 SELFLEVEL valve box top dimensions

Note: It is recommended to use the SELFLEVEL valve box top with valve box bottoms and extensions to reduce infiltration and debris.





Learn more about this product at ejco.com/selflevel-valve-box

REVOLUTION® ACCESS ASSEMBLY

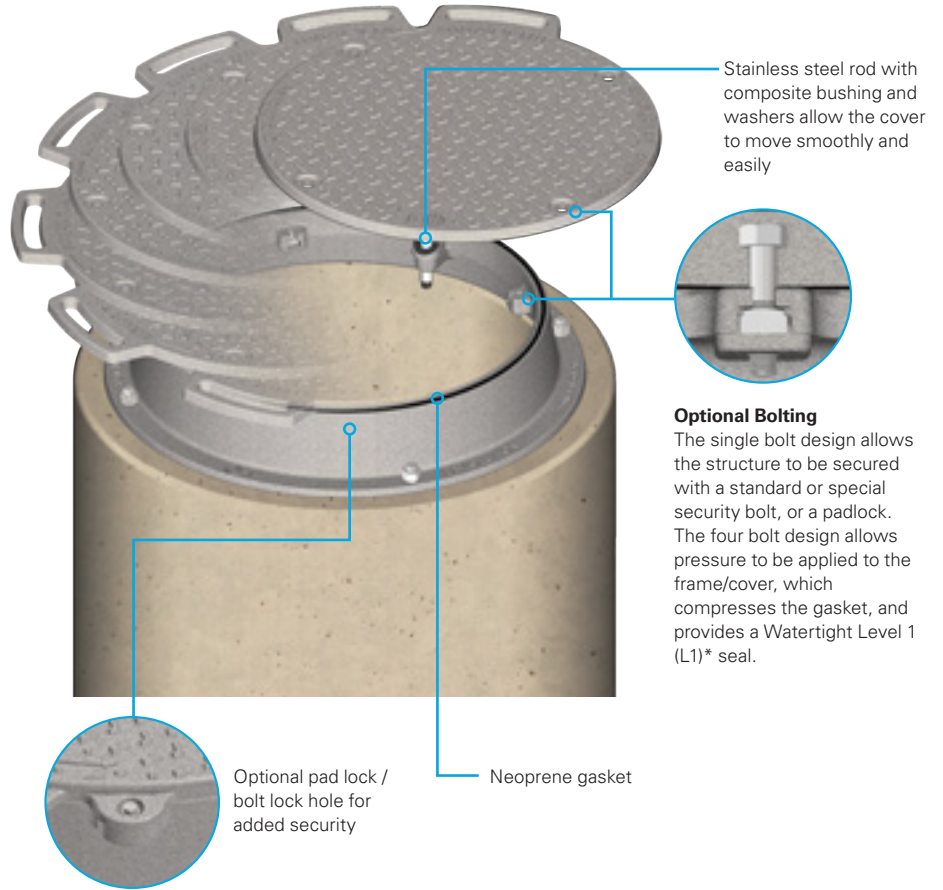
Discover the REVOLUTION® access assembly — it is the perfect solution for elevated structures and raised access points. The cover pivots away from the hole opening, eliminating the need for manually raising or lowering the cover. It rotates in either direction on a cast-in stainless steel rod that ensures it remains attached to the frame. No special tools are required to open and close.

Standard Features

- Non-traffic rated
- Lightweight cover — easy to open, no lifting required, and takes only one person to operate
- Stainless steel rod cast in cover
- Water resistant — cover overlaps frame
- A 1/4" round neoprene gasket is secured to prevent roll out and provides odor control
- 5" frame height
- Made in the USA

Options

- Special lettering
- Watertight (L1)*
- Integrated hole for optional padlock
- EON LOCK® bolting
- Security bolting



Lift and Rotate Cover



To open the cover, slightly lift and rotate the cover. The patented design provides cover lift and rotation with minimal effort. Worker safety is improved by eliminating the need to hoist heavy covers when opening or closing the elevated unit. U.S. Patent 7,832,958

Resists Water Infiltration



The surface of the cover extends slightly past the edge of the frame, and the neoprene gasket helps seal the unit against water infiltration. A watertight seal can be achieved with the four bolt design.

REVOLUTION Access Assembly Sizes

Clear Opening Dia.	Series No.
24	REVO24
28	REVO28
30	REVO30

Note: All dimensions are in inches.
*Incidental water only (no pressure or head rating)..

Important Safety Information

- Securely bolt the frame to manhole cone on 29 3/4" bolt circle
- Do not subject cover to any load when in open position
- Do not install in areas of vehicular traffic



Learn more about this product at ejco.com/revolution

DUCTILE IRON HINGED HATCH ACCESS ASSEMBLY

Ductile iron access hatches have been designed for improved ergonomics, and are available in heavy duty and airport extra heavy duty applications.

On a cover that can weigh as much as 550 lb, the lifting force required to open the cover is less than 35 lb due to the uniquely designed mechanical strut.

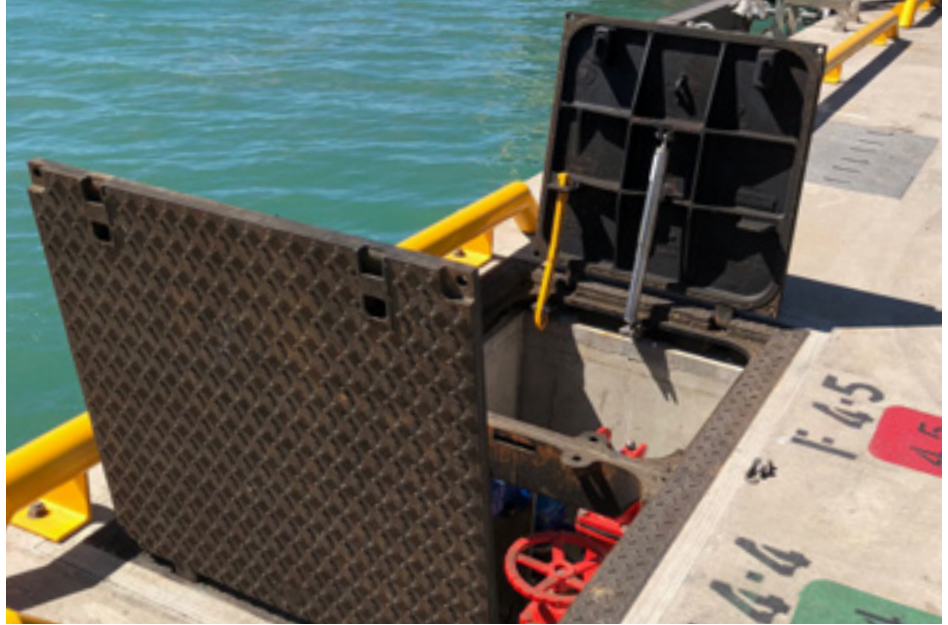
The self-engaging safety bar provides added protection while the underground infrastructure is accessed, and safety grates can be specified for added fall through protection.

Standard Features

- Ductile iron frame and cover
- Cover opens to 105°, safety catch and removal at 90°
- Self-engaging safety bar
- EON LOCK® bolting
- MPIC® multi-tool pick bar
- Bolting
- Made in the USA

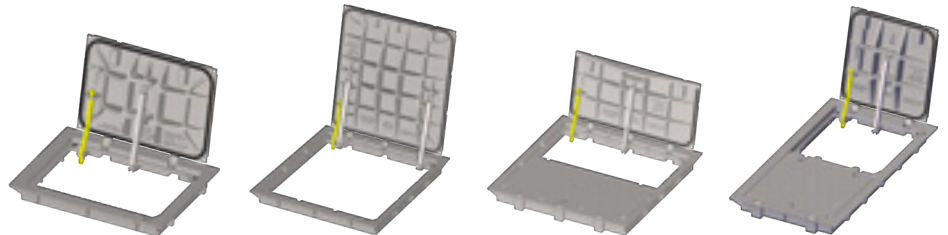
Options

- Mechanical lift assist (standard feature for airport rated models)
- Top and bottom flange designs
- Safety grate
- INFRA-RISER® adjustment riser
- Forming skirt



Wide Availability of Sizes

Shown below are just a sample of the various cover openings and sizes. See the table below for the full range of available clear opening sizes and load ratings.

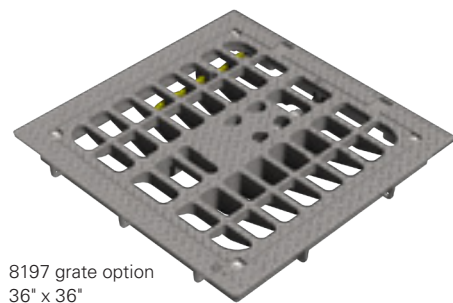


8192 hinged hatch
24" x 36"

8198 hinged hatch
with dual lift assist
48" x 48"

8218 double assembly
48" x 48"

8196 double assembly
30" x 62"



8197 grate option
36" x 36"

Ductile Hinged Hatch Clear Opening Options

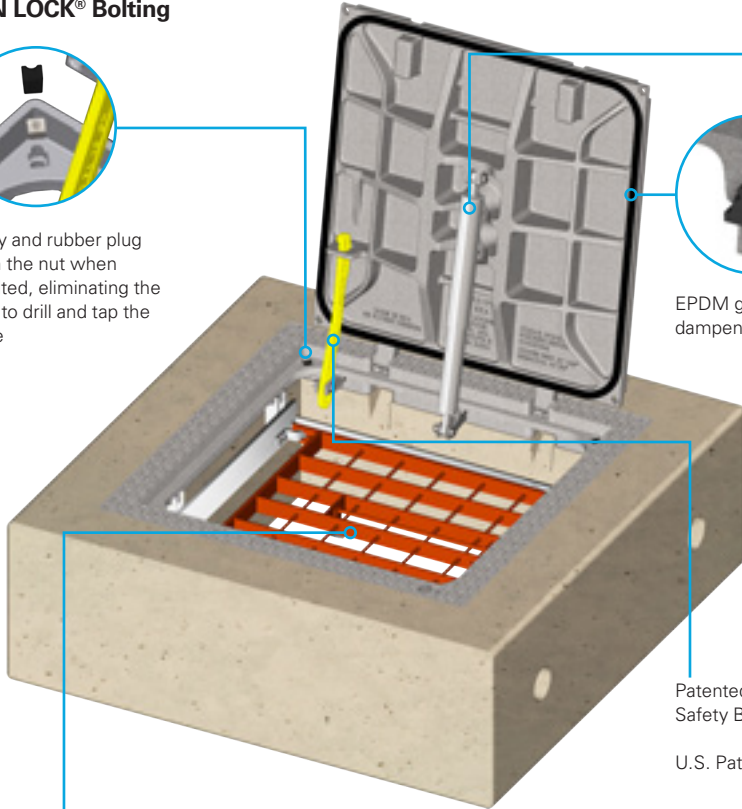
Clear Opening Size	Airport Extra Heavy Duty Series No.	Heavy Duty Series No.
24 x 24	8195	8215
24 x 36	8192	8212
30 x 30	8196	8216
30 x 48	—	8219
30 x 62	8196—Double	8216—Double
36 x 36	8197	8217
36 x 48	8191	8211
36 x 74	8197—Double	8217—Double
42 x 42	8194	8214
48 x 48	8198	8218
48 x 48	8198—Double	8218—Double
48 x 98	8198	8218

Note: All dimensions are in inches.

EON LOCK® Bolting



Cavity and rubber plug retain the nut when unbolted, eliminating the need to drill and tap the frame



EPDM gasket for sound dampening

Patented Self-engaging Safety Bar

U.S. Patent 8,449,216

Lift Assist Option

Lift Assist is a corrosion-resistant stainless steel mechanical spring strut. The rugged design is clean and maintenance free. The strut takes up less space in the clear opening than a traditional spring assist. It is made without internal gases or seals and is fully self-contained, protecting coils from exposure to the elements.



Optional Cam Lock

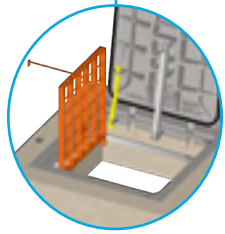


Security cam lock and wrench shown. Wrench is only removable when cover is in the locked position.

Optional Safety Grate

Provides additional safety features

- Doors cannot be closed unless the fall through protection has been put back in place (protecting the next operator).
- Visual inspections and limited maintenance can be done while safety grate is left in place.
- Orange safety grates create a visual barrier around the pit; promotes an awareness of the hazard.
- Grate can be locked independently of the hatch, adding another level of security when needed.



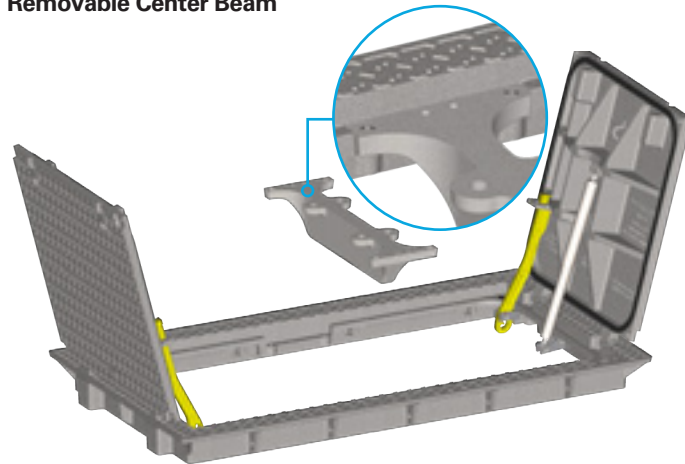
Optional Forming Skirt



Available forming skirt simplifies precasting the hatch in concrete—no need for added forming to protect the inner hatch. The leave-in-place aluminum skirt can be made to fit any concrete slab thickness (image showing hatch upside down with forming skirt).

U.S. Patent 10,851,515

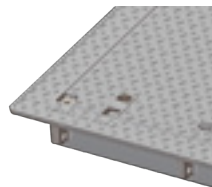
Removable Center Beam



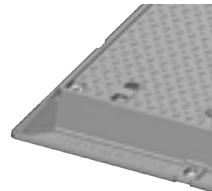
Removable center beam provides a much greater clear opening access on several double hatch models. Removal/replacement is simple with 4 bolts securing the beam to the frame.

U.S. Patent 10,851,515

Frame Options



Top flange frame



Bottom flange frame



Learn more about this product at ejco.com/hatch

HINGED TRENCH ASSEMBLY

The hinged trench assembly simplifies access for supply lines and collection systems. Available with hinged covers or grates, the system can be configured to any length of trench needed.

Optional mechanical strut improves ergonomics by reducing lifting force to 35 lb or less for the entire range of motion—available for both cover and grate versions.

The covers offer optional cable cut outs for electrical, telecommunications, and other supply lines to be temporarily exposed for use while the covers remain in the closed position.

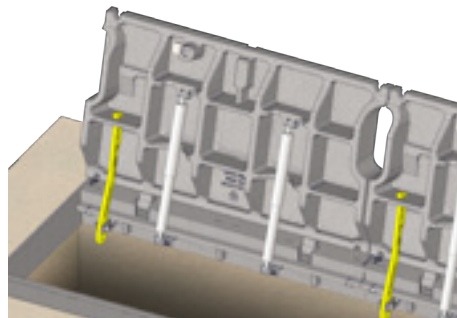
Standard Features

- Airport extra heavy duty
- Top flange design
- Rail vent slots
- Self-engaging safety bar
- Rebar holes in gussets
- Bolt holes for connecting rails together
- Made in the USA

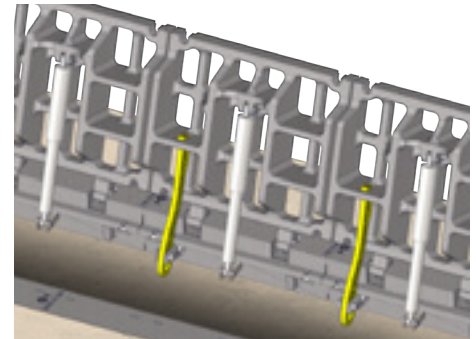


Self-engaging safety bar with optional mechanical lift assist make the hinged trench covers and grates safe and easy to use.

Covers



Grate



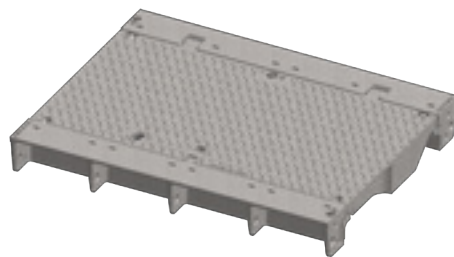
Hinged Trench Available Options

Options	Grate	Cover
Bolting	Yes	Yes
Cam Lock	—	Yes
Cable Cut Outs	—	Yes
Lift Assist	Yes	Yes
MPIC® Pick Bar	—	Yes

Hinged Trench Sizes

Type	Trench Width	Length	Series No.
Grate	18	24	6906
Cover	24	24, 36, 48	6808
Grate	24	24	6908
Cover	36	24, 36, 48	6811

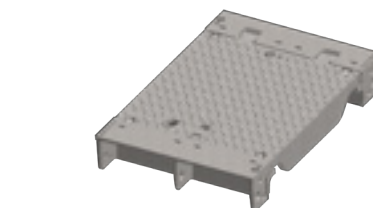
Note: All dimensions are in inches.



48" long solid cover



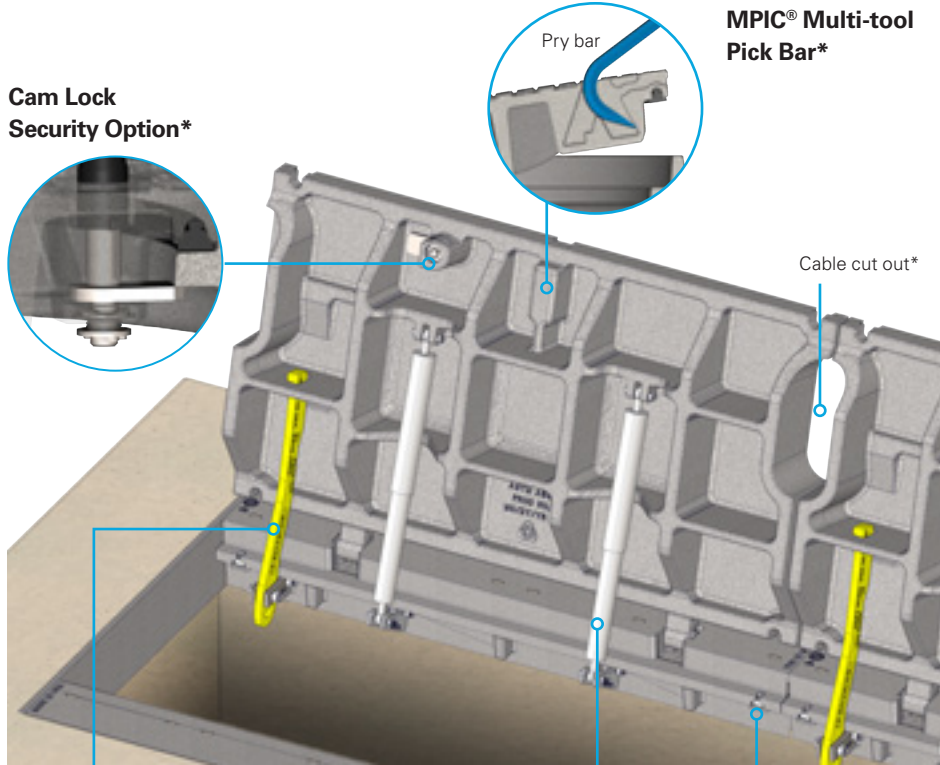
24" long grate



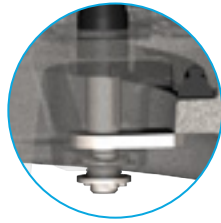
24" long solid cover



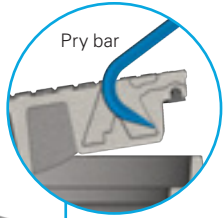
37 3/8" wide steel end plate



Cam Lock Security Option*

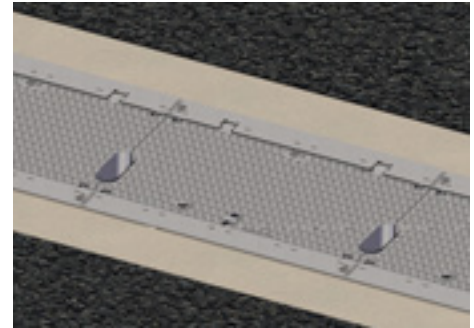


MPIC® Multi-tool Pick Bar*




Learn more about this product at ejco.com/hinged-trench

Cable Cut Outs*



Optional cable cut outs for covers allow for temporary access to supply lines while keeping the covers closed.

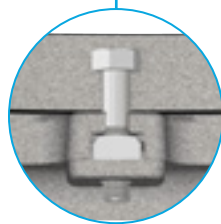
Safety Bar

Patented Self-engaging Safety Bar keeps the trench open and protects from unintended closure

U.S. Patent 8,449,216

Lift Assist Option

Lift Assist is a corrosion-resistant stainless steel mechanical spring strut. The rugged design is clean and maintenance free. The strut takes up less space in the clear opening than a traditional spring assist. It is made without internal gases or seals and is fully self-contained, protecting coils from exposure to the elements.



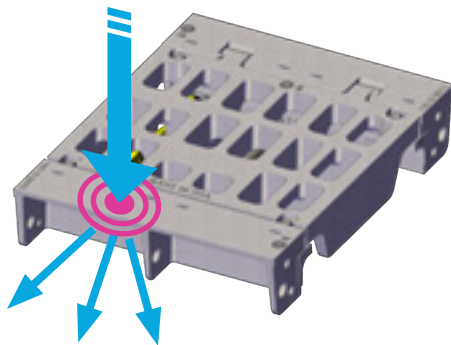
EON LOCK® Bolting

Compatible with standard hex bolts or special security designs, the EON LOCK design retains the nut when the cover is unbolted and allows the nut to be removed in the future should it need to be replaced.

VERSACAM® Security Lock

A simple and robust approach for heightened security. See page 16 for more information.

Top Flange Design



The top flange design with a wide flange, fully supported with concrete underneath, distributes heavy loads over a larger area which reduces cracking and spalling of the surrounding concrete.



Venting slots in the frame rail allow for air to escape during the pouring process, fully filling the voids with concrete for support and weight disbursement.



Designed to work with concrete trench forming systems that improve the speed of installation versus traditional installation. Using concrete, no liners are needed—eliminating combustible material in applications where fire suppression measures are needed.

*Not available for grates

STORMSURGE® ACCESS ASSEMBLY

In areas with flash-flooding or tidal concerns, manhole covers can become an unexpected concern for water systems and the general public. In the event of a major storm surge, the underground water pressure can be so powerful that it can force a cast iron manhole cover open and dislodge it during the event. This creates a dangerous safety hazard for both motorists and pedestrians, especially if the area is submerged under flood waters and not visible.

EJ has developed a manhole access assembly to solve this problem. During a storm surge or backflow event, the cover is allowed to lift up to 16°, enabling water to flow out and relieve the pressure. The locking arm and hinge restrain the cover and allow it to automatically re-seat itself after the pressure returns to normal.

Standard Features

- Heavy duty
- Ductile iron
- Cover permanently attached to frame
- Non-slip surface
- Safety catch at 90° to prevent unintended closure
- Patented design features
- Made in the USA

Options

- Solid or vented covers
- Custom logo covers
- Special lettered covers
- Security bolt for controlled access and theft deterrence

STORMSURGE Access Assembly Sizes

Clear Opening	Frame Height	Series No.
24	4	1032
30	6	3200

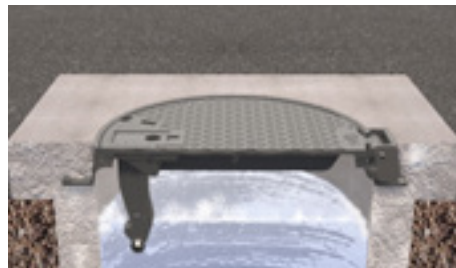
Note: All dimensions are in inches.



Learn more about this product at ejco.com/stormsurge



During a major rain or tidal event, the water pressure can be powerful enough to “push up” and dislodge a manhole cover, creating a dangerous safety hazard for the public and a serious concern for municipalities. EJ has developed a manhole access assembly specifically to combat this situation, by venting pressure and restraining the cover to the frame. As the surge subsides, the cover returns to the seated position.

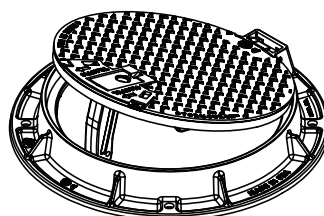


1032 series in the closed position.

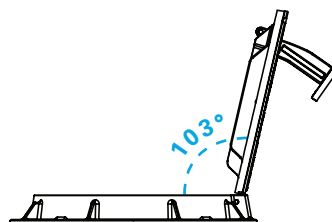


1032 series in the venting position.

24" Clear Opening



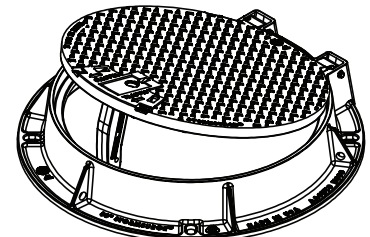
Single hinge 1032 series with 24" clear opening and up to 16° cover venting (00103250A01).



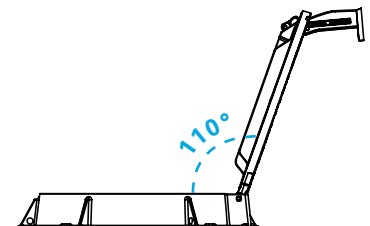
Shown in the open resting position.

U.S. Patent 8,714,867 and 8,784,000

30" Clear Opening



Dual hinge 3200 series with 30" clear opening and up to 15° cover venting (00320021A01).



Shown in the open resting position.

DUOSEAL® WATERTIGHT ACCESS ASSEMBLY

Prevent discharges, protect against inflow, and suppress odors with DUOSEAL® watertight access assembly.

The DUOSEAL access assembly is ideal for flood prone areas or to prevent unwanted fluids from overflowing due to a surcharge in the system.

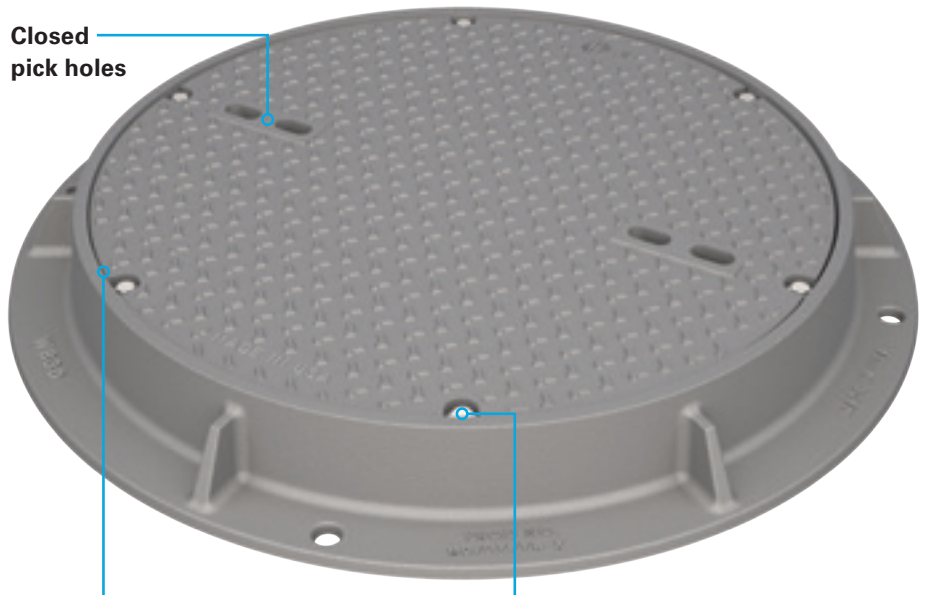
The bolted, dual-gasket design creates a watertight barrier to contain manhole structures and prevent inflow or overflow. The assembly has been tested to EJ Watertight Level 8 (L8)*, meaning it can withstand 3 1/2 atmospheres of pressure (51.45 psi), which is the equivalent of having approximately 118 ft of water on top of the manhole assembly.

Standard Features

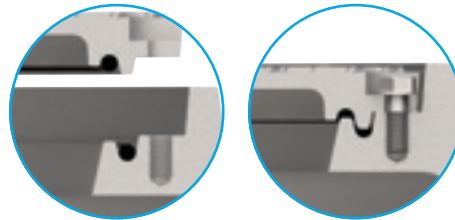
- Heavy duty rated
- Watertight (L8)
- Closed pick bars
- Dual 3/8" diameter round neoprene gaskets
- Ductile iron cover with gray iron frame
- Stainless steel bolting
- Made in the USA

Options

- Special lettered covers
- Custom logo covers
- Security bolting



Dual Gaskets



A dual gasket configuration between the frame and cover compress to seal the assembly and separate the interior structure from the external environment.

Bolted

6 stainless steel bolts and washers screw into blind bolt holes. This ensures the cover is securely attached to the frame and does not allow fluid into or out of the manhole.

Watertight



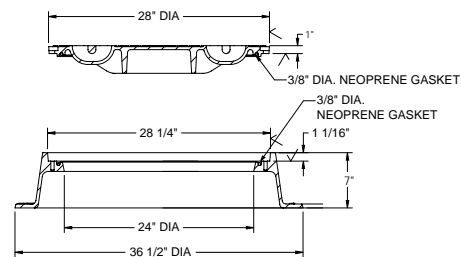
Level 8 Watertight*
(3 1/2 atm, 51.45 psi)

DUOSEAL Watertight Access Assembly Sizes

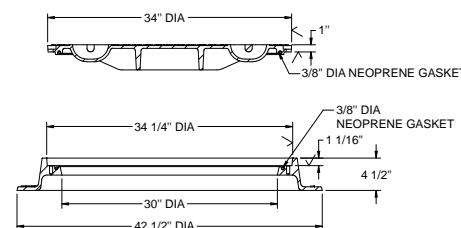
Clear Opening	Frame Height	Series No.
24	7	W824
30	4 1/2	W830

Note: All dimensions are in inches.

24" Clear Opening



30" Clear Opening



Learn more about this product at ejco.com/duoseal

CAMPRESSION® ACCESS ASSEMBLY

The CAMPRESSION® access assembly solution minimizes water infiltration, controls odor and provides improved security.

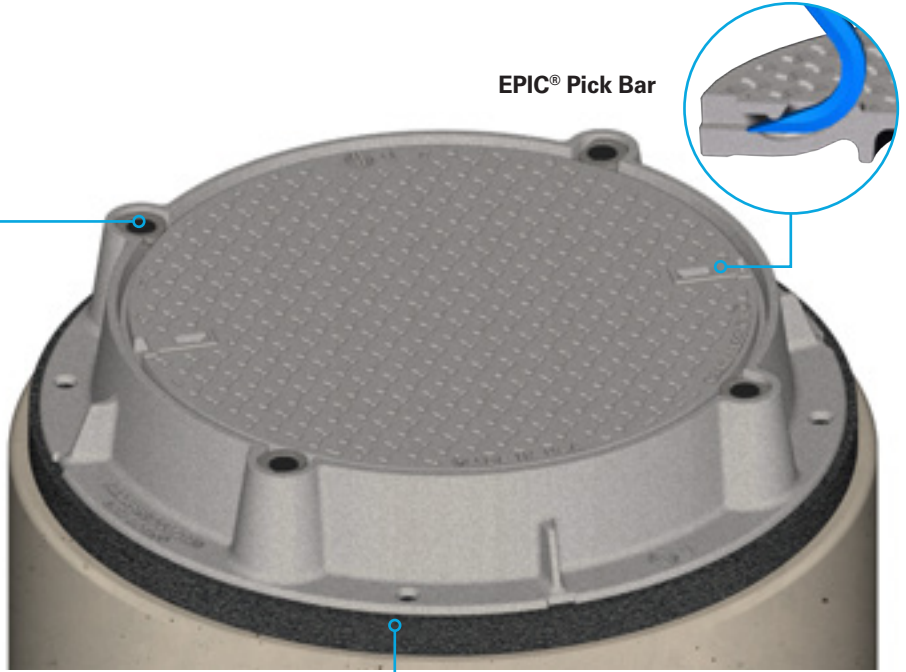
Evenly distributed cam locks apply pressure to the cover against a neoprene gasket, forming a tight seal to minimize water infiltration.

Standard Features

- Heavy duty load application exceeds AASHTO M 306 certification
- Ductile iron cam locks with EON LOCK® bolts provide watertight (L1)* and security features
- 1/4" round neoprene gasket
- EPIC® closed pick slots
- Lightweight ductile iron cover, per ASTM A 536
- 6" frame height
- Made in the USA

Options

- Custom logo cover
- Special lettered cover
- 2" adjustment riser available



EPIC® Pick Bar

Optional INFRA-RISER® Rubber Composite Adjustment Riser

Cam Locks

Ductile iron cam locks rotate to open cover, and back to tighten and secure cover. No need to completely remove the bolts—just loosen bolts and rotate cam.



Closed with cap on

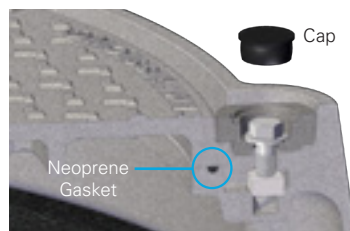


Cap off, loosen bolt, rotate cam



Rotate 90° to open

EON LOCK® Bolting



EON LOCK® replaceable threads.

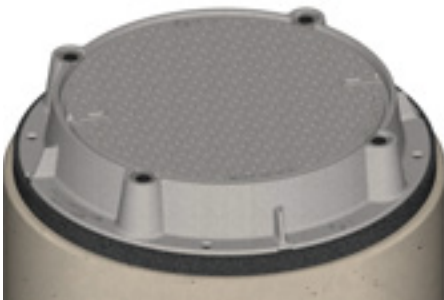
Stackable Frames



Frames stack to improve safety and conserve space during handling, transit, and storage.



24" three bolt assembly (CAMP24 series)



30" four bolt assembly (CAMP30 series)

*Incidental water only (no pressure or head rating).



COMPOSITE ACCESS SOLUTIONS

Our composite manhole frames and covers deliver superior safety and performance for your infrastructure needs. The heavy duty DUROSTREET® product is proof load tested to 50,000 lb and exceeds industry standards by fatigue testing to 2 million cycles at 16,000 lb.

We have built up over 25 years of tradecraft and know-how when it comes to producing our full line of composite products. This advanced composite solution is made from custom design fiberglass and resin selection based on application and required load rating.

Composites address ergonomic concerns, they're non-corrosive, non-conductive, and a natural theft deterrent because they do not have any scrap value. They're also interchangeable with existing cast iron frames—saving you time and money.

Our composite manhole series include options for roadways, off-street areas, and handholes. You can incorporate custom logos and lettering, or select from a variety of options such as shape, size, flame retardant, AMR attachments, heat transfer protection, locking, or watertight.

Made in the USA



Heavy duty DUROSTREET access assembly is proof load tested to 50,000 lb and fatigue tested for **2 million cycles** at 16,000 lb, exceeding industry standards.*



Learn more about this product at ejco.com/composite



Ergonomics – Lightest weight on the market
Heavy duty composite assemblies are light enough for one person to easily access the underground infrastructure, yet strong enough for vehicular traffic.



Non-Corrosive
Composite products offer superior performance in harsh environments that can develop in underground infrastructure, such as areas with high H2S.

Solutions for your Application



Roadway Applications
DUROSTREET® Access Assembly
Heavy Duty (H25) Loads



Off-Street Applications
DUROWALK® Access Assembly
Medium Duty Loads



Composite Handholes
DUROCOM™ Composite Handhole
For Underground Wiring

*In house testing on DUROSTREET heavy duty composite covers.

HINGED GRATE ASSEMBLY WITH SLAM LOCK

The heavy duty hinged grate assembly works great for drainage inlets that require a higher level of security than a stand alone frame and grate.

The heavy duty ductile iron frame and hinged grate, a part of the 5624 series, is typically installed in high traffic areas. The slam lock closure feature prevents the grate from opening inadvertently and conceals the lock from unauthorized access. Self wedge seating allows traffic to push the grate into the frame — preventing the grate from rocking.

The lightweight grate opens to 115° and removes at 90°.

Standard Features

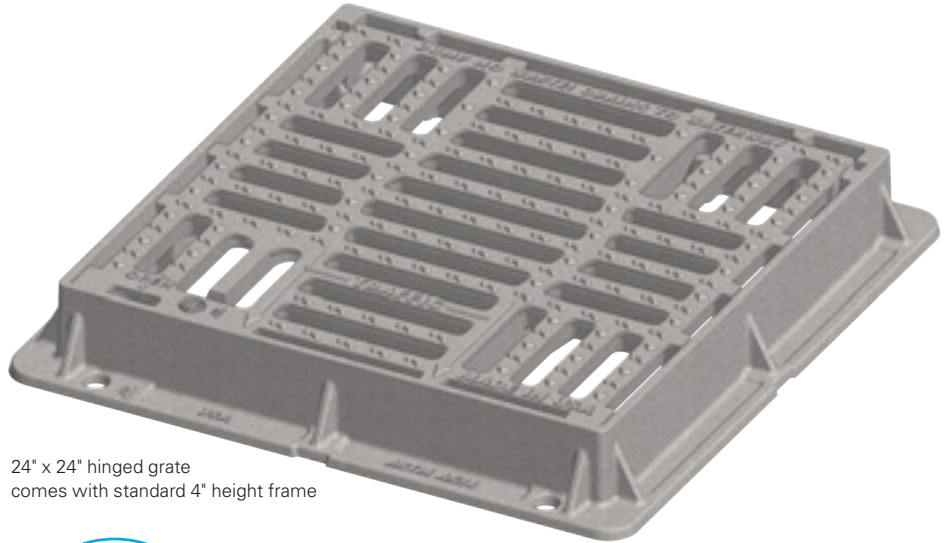
- Heavy duty
- Square grate 290 sq. in. open area
- Ductile iron frame and grate meet ASTM A 536 requirements
- Lightweight grate opens to 115° and removes at 90°
- Self wedging grate seating
- Slam lock (locking feature)
- Made in the USA

Options

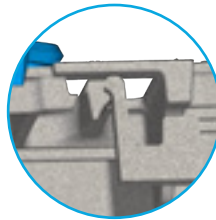
- 3 flange (including left and right hand variations) and 4 flange frames available
- Special lettering



Grate includes directional instruction markings and anti-slip texture. Special lettering options (including environmental messaging) are available.

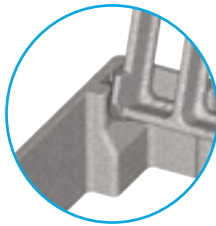


24" x 24" hinged grate comes with standard 4" height frame



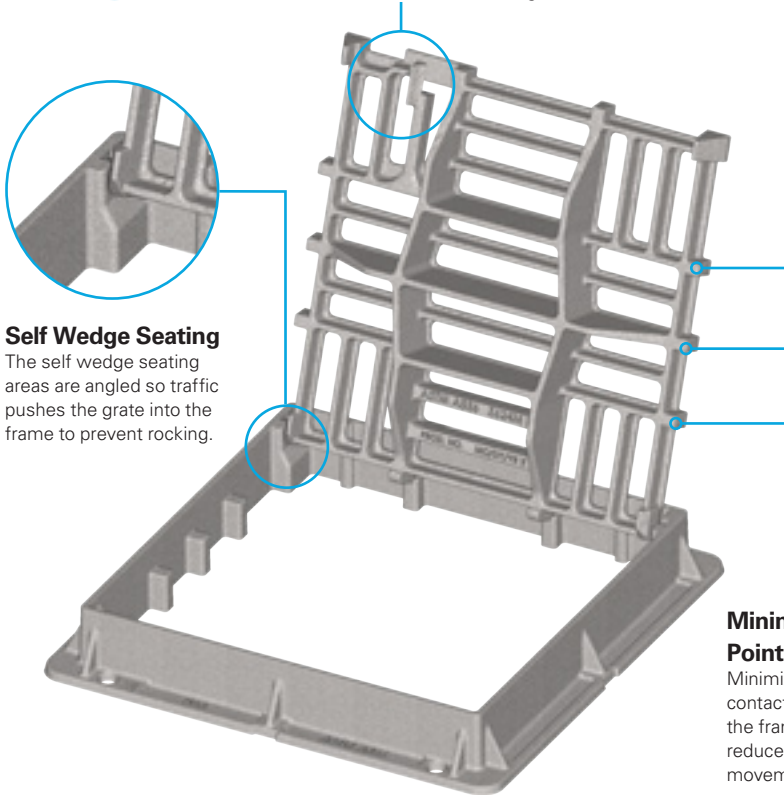
Slam Lock

The slam lock design is an integral arm that moves when the grate is shut preventing the grate from being opened inadvertently. When closed, the seamless design also makes the latch invisible to the untrained eye, providing greater security from unauthorized removal of the grate.



Self Wedge Seating

The self wedge seating areas are angled so traffic pushes the grate into the frame to prevent rocking.



Minimal Rest Points

Minimizing the contact points around the frame helps reduce noise and movement.



Learn more about this product at ejco.com/hinged-grate

ERMATIC® MODULAR COVERS

The ERMATIC® modular cover system is a comprehensive and highly engineered range of access covers for a wide variety of underground services. This modular system can be customized to fit any underground vault dimension or cover configuration. The ERMATIC range leverages the global engineering and design experience within EJ, to enhance ergonomic design and security.

Standard Features/ Options

- Pedestrian to airport rated (or EN124 Standards – B125, C250, D400, E600, F900)
- Wide range of cover sizes from 24" x 24" and larger
- Watertight (L1)
- Security locking
- Available with hinged and spring loaded struts for assisted opening
- Ergonomic lift handles for opening
- Available with safety grates and/or safety railings
- Cover options: solid cover with slip resistant tread, recessed for concrete infill or brick pavers, or cover with removable inner hatch/cover
- Available with PREMARK® anti-skid coating

Project Applications

- Sewerage: inspection pits for sludge chambers, access shafts for large plants, etc.
- Telecommunications: cable jointing chambers, etc.
- Utility: lighting, signals, transformer pits, cable joint boxes, etc.

Project Types

- Airports and ports
- Railways
- Tunnels
- Power stations
- Water treatment and purification plants
- Manufacturing plants
- Exhibition centers, leisure parks, stadiums, and other public arenas

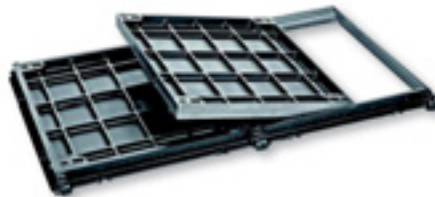
The ERMATIC range of modular covers are produced in France.



Modular Construction—The use of modular elements gives a vast range of sizes. Frame elements (side frames and end plates) are assembled using bolts and aluminium joints to provide linear openings for even the longest ducts. For clear openings wider than 47 3/16" (1200 mm), ERMATIC units use removable beams supported in boxes which are fixed to the frames. This allows the construction of units to suit the largest openings.

Ultimate Protection

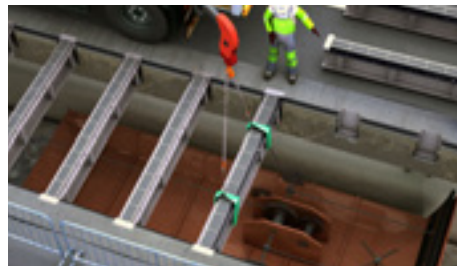
ERMATIC products assure protection against damage, debris or aggressive chemicals, and allow designers to conceal underground services.



1/2/3 covers unit



Continuous duct cover



Removable beams give unobstructed access to large vaults.



Modular design allows for infinite length to accommodate even the longest duct systems.



Learn more about
this product at
ejco.com/ermatic



CITY OF
TRAVERSE CITY
MICHIGAN

SELF LEVEL®



NO PARKING

25

STOP

MADE IN U.S.A.





ej

ejco.com
800 626 4653



Americas

800 626 4653
231 536 2261

EMEA

Europe, Middle East
and Africa

+33 (0)344 08 28 00

Asia-Pacific

+61 (0)7 3216 5000

EJ

301 Spring Street
PO Box 439
East Jordan, MI 49727
800 626 4653
231 536 2261
us.sales@ejco.com

Registered Mark(s)



CAMPRESSION®
EON LOCK®
EPIC®
ERGO®
ERMATIC®
DUOSEAL®
HINGECO®
INFRA-RISER®
MPIC®
REVOLUTION®
SAFE HATCH®
SELFLEVEL®
STORMSURGE®