



DUROSTREET® Composite Access Assembly

The DUROSTREET® access assembly is the strongest and most durable composite manhole cover on the market. These heavy duty covers have been installed in roadways since 2012. We exceed industry standards by fatigue testing to 2 million cycles at 16,000 lb.

Benefits:

- Durability and strength
- Ergonomically friendly
- Non-Corrosive
- Non-Conductive
- No signal interference
- Theft deterrent (no scrap value)

Standard Features

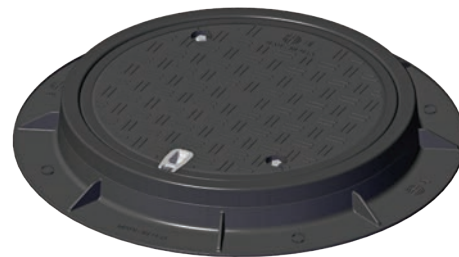
- Heavy duty (H25)
- Excellent fatigue life—2 million cycles at 16,000 lb of load
- Color: black
- Pick bar made of 316 stainless steel
- Quarter turn paddle lock with penta head made of 316 stainless steel
- UV resistant—tested to ASTM G154-16 testing standard Cycle 1 for 1600 hours
- Cover and frame dampeners protect edges, improve wear, and dampen traffic vibration
- Five year limited warranty
- Made in USA

Options

- Custom shapes: square or rectangular
- Special lettering or custom logos
- Additional security locking
- Custom diameters to fit existing frames
- Flame retardant resin
- AMR attachments
- Heat transfer protection

DUROSTREET Standard Sizes

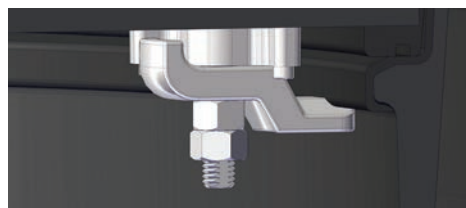
Clear Opening	Frame Height
22"	4 1/4"
24"	4 1/8"
30"	5"
36"	5"



24" clear opening



30" clear opening



Quarter turn paddle lock—closed position.

