



DUOSEAL® Watertight Access Assembly

Prevent discharges, protect against inflow, and suppress odors with DUOSEAL® watertight access assembly.

The DUOSEAL access assembly is ideal for flood prone areas or to prevent unwanted fluids from overflowing due to a surcharge in the system.

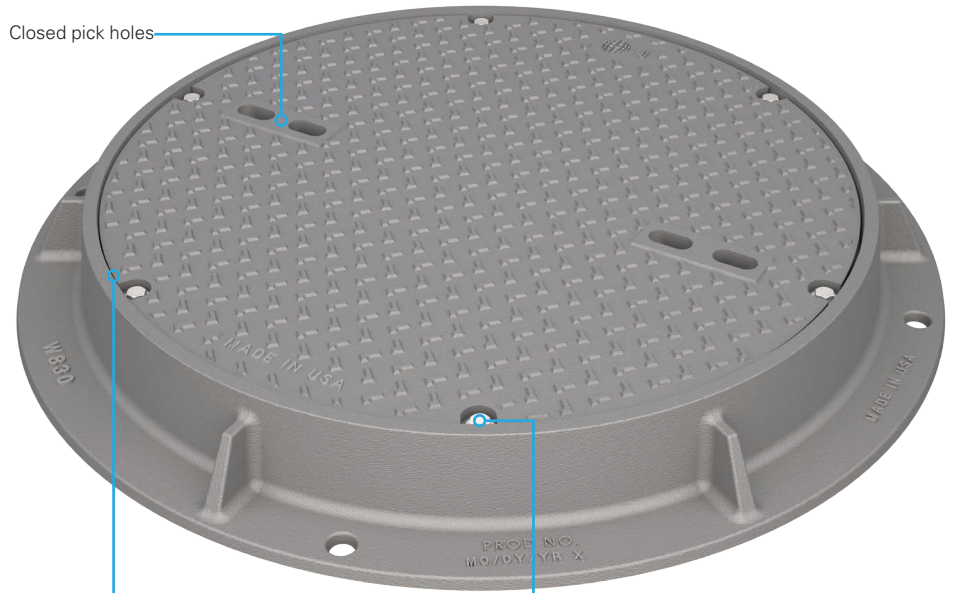
The bolted, dual-gasket design creates a watertight barrier to contain manhole structures and prevent inflow or overflow. The assembly has been tested to EJ Watertight Level 8 (L8)*, meaning it can withstand 3 1/2 atmospheres of pressure (51.45 psi), which is the equivalent of having approximately 118 ft of water on top of the manhole assembly.

Features

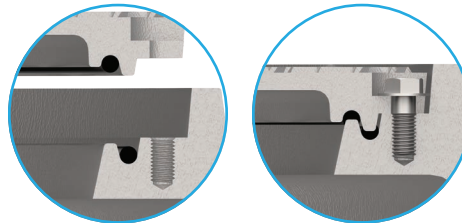
- Heavy duty rated
- Watertight (Level 8)
- Closed pick bars
- Dual 3/8" diameter round neoprene gaskets
- Ductile iron cover with gray iron frame
- Stainless steel bolting
- Made in the USA

Options

- Special lettered covers
- Custom logo covers
- Security bolting



Dual Gaskets



A dual gasket configuration between the frame and cover compress to seal the assembly and separate the interior structure from the external environment.

Bolted

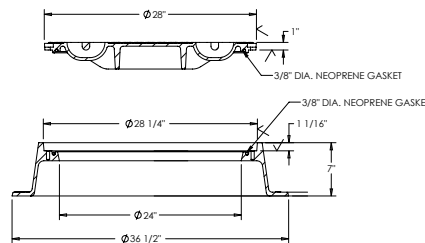
6 stainless steel bolts and washers screw into blind bolt holes. This ensures the cover is securely attached to the frame and does not allow fluid into or out of the manhole.

Watertight

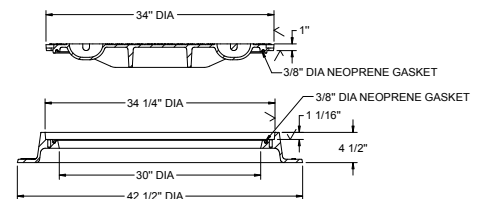


**Level 8
Watertight***
(3 1/2 atm, 51.45 psi)

24" Clear Opening



30" Clear Opening



DUOSEAL Watertight Access Assembly Sizes

Clear Opening	Frame Height	Series No.
24	7	W824
30	4 1/2	W830

Note: All dimensions are in inches.

*Contact your EJ Sales Representative for additional information about watertight classification levels.