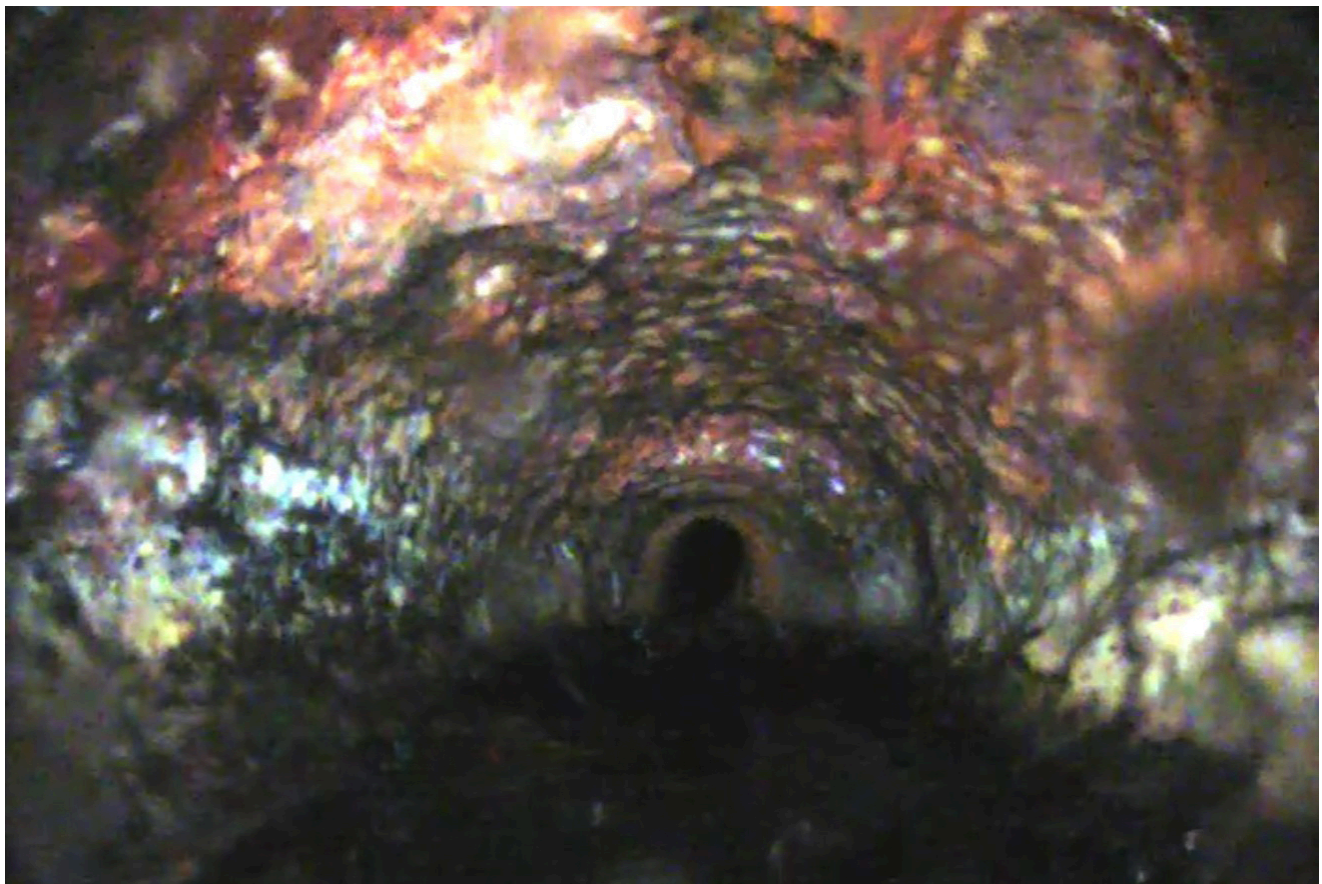


CASE STUDY: Revitalizing a Century-Old Home's Plumbing System with Innovative CIPP Spot Repair

Homeowners facing a non-functional century-old farmhouse bathroom find a cost-effective, non-disruptive solution to severe clogging and deteriorating pipes, sidestepping excavation, and ensuring a lasting fix.

Situation

Residing in a century-old farmhouse, homeowners faced a plumbing crisis that disrupted their daily lives. One of their bathrooms had become non-functional, due to severe clogging and backups. This inconvenience forced the occupants to use the shower in one bathroom and the toilet in another. The situation escalated when they discovered that their cast iron pipes were deteriorating and a slight misalignment in pipes had formed at the foundation, a problem diagnosed by a plumber. The proposed solution was excessively high in cost: a complete pipe replacement, leaving the homeowners helpless and seeking a more practical option.



Deteriorating cast Iron pipes and blockage causing severe clogging and backups.

An Alternative Solution

Months went by when a visiting friend mentioned they had heard about a no-dig alternative to traditional excavation. Intrigued by the prospect of a cost-effective, trenchless solution, the homeowners did some research and explored their possibilities. After exploring a few websites and making a handful of phone calls, the homeowners found a glimmer of hope in the PipePatch® spot repair system by Source One Environmental (S1E).

Solution

S1E connected the homeowner with a contractor who assessed the issue by utilizing a CCTV camera to inspect the line in advance and recommended The PipePatch® XTEND system for the primary issue. Available for 3"-10" diameter pipes, PipePatch® XTEND is a longer spot repair solution than standard 24" and 48" patches, featuring an extra-long packer and complete push-in-place or pull-in-place liner kit. By eliminating the necessity for excavation, the PipePatch® XTEND addressed the core issues by creating a new pipe within the cast iron pipes without disrupting the homeowner's property. This non-intrusive approach not only reduced costs significantly but also provided a sustainable, long-lasting solution to the homeowners' plumbing problems.



Prepping the XTEND Packer - Spot repairs offer faster solutions, targeting specific damage without the extensive downtime.

Process

To execute the repair, the contractor and S1E Training Team planned and implemented a step-by-step process, ensuring precision and efficiency. First, the pipes were inspected and then underwent thorough cleaning using a Picote Mini Miller Machine equipped with cleaning chains and brushes. This crucial step prepared the pipes for the subsequent repair, eliminating any debris and buildup, ensuring the effectiveness of the patching process. For the primary repair, the team installed (2) PipePatch® XTEND Kits, each measuring 10 feet. Due to the confined access points, the XTEND patches were preferred over traditional CIPP lining methods. This strategic decision ensured the successful rehabilitation of the deteriorating pipeline, resolving the homeowner's concerns effectively. The team then utilized the Mini Miller again as it played an integral role in reinstating one of the branches that connected to the lateral. Using the reinstatement cutter and sanding paddles, the team skillfully restored the lateral connection, providing a seamless integration into the repaired pipeline.

