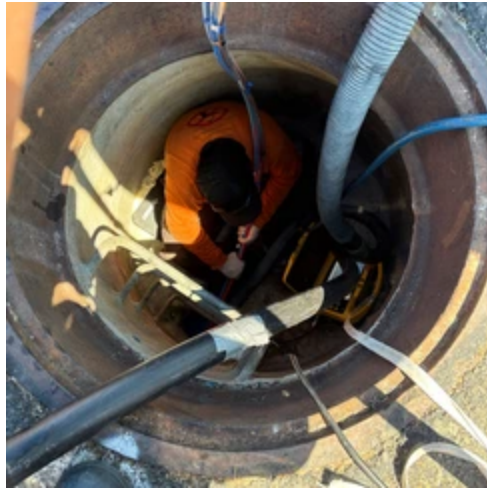
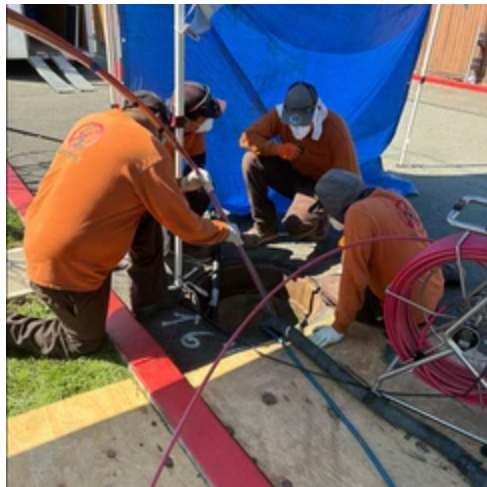


🚧 Live Training Success with PipeCaster Pro Gen4 near Oakland, CA





Location: Apartment Complex, Greater Oakland Area

Duration: 5 Days

System Used: PipeCaster Pro Gen4 with Pipecast Rigid Structural Polyurea Resin

When precision meets performance, great things happen—and that’s exactly what unfolded during a recent live training session hosted by IPP Solutions near Oakland, California. Held at a bustling apartment complex undergoing key infrastructure upgrades, the session showcased the power and reliability of the [PipeCaster Pro Gen4 spray lining system](#), applied to a challenging real-world scenario.

Our expert IPP Solutions trainer guided the training team through every step of the spray lining process—using [Pipecast rigid structural polyurea resin](#) on aging **8-inch clay sewer lines** spanning approximately **300 feet** in length. In addition to the pipe rehabilitation, the training tackled multiple **sewer manholes**, demonstrating the system’s versatility in handling complex geometries and confined spaces.

Despite the technical demands, the work was executed seamlessly over five days, thanks to the comprehensive curriculum and hands-on instruction by our experienced IPP trainer. From setup to cleanup, every aspect of the liner application was covered with meticulous attention to detail.

This wasn’t just a demonstration—it was an empowerment session. Our contractor partner and their technician didn’t just learn to use the equipment; they mastered it. By the end of the training, they had successfully completed the project and earned their certification as a **new PipeCaster Pro Gen4 installer** under the IPP Solutions umbrella.

This certification represents more than a badge—it’s a testament to their commitment to quality, durability, and innovation in pipe rehabilitation.

Live training offers something that manuals and classroom sessions can’t: **real-world experience**. At IPP Solutions, we believe in showing—not just telling—how our technology performs. With the PipeCaster Pro Gen4, we proved once again that structural spray lining can be efficient, reliable, and scalable across a range of municipal and residential projects.

Congratulations to our newest certified installer! We’re proud to welcome you into the growing network of professionals who are redefining underground infrastructure—one pipe at a time.

San Francisco, CA

Gaithersburg, MD

Kalkaska, MI

Los Angeles, CA

Sun City West, AZ

Costa Mesa, CA

Santa Ana, CA

Caldwell, ID

Zanesville, OH

Buena Vista, CO

Huntington Beach, CA

Portland, OR

San Jose, CA

Stockton, CA (×2)

Fallbrook, CA

Hibbing, MN

Sioux Falls, SD

Kansas City, KS

Bellmore, NY

Santa Clara, CA

Pleasant Hill, CA

Your dedication to excellence and innovation is what drives our industry forward. We're excited to witness the incredible results you'll deliver with PipeCaster Pro!

The IPP Advantage

At IPP Solutions, we're redefining infrastructure rehabilitation with cutting-edge materials and rapid deployment systems. Our PipeCaster™ Pro Gen4 and PipeCast™ Rigid resin are engineered for performance, speed, and sustainability—making us a trusted partner for municipalities and utilities across the country.