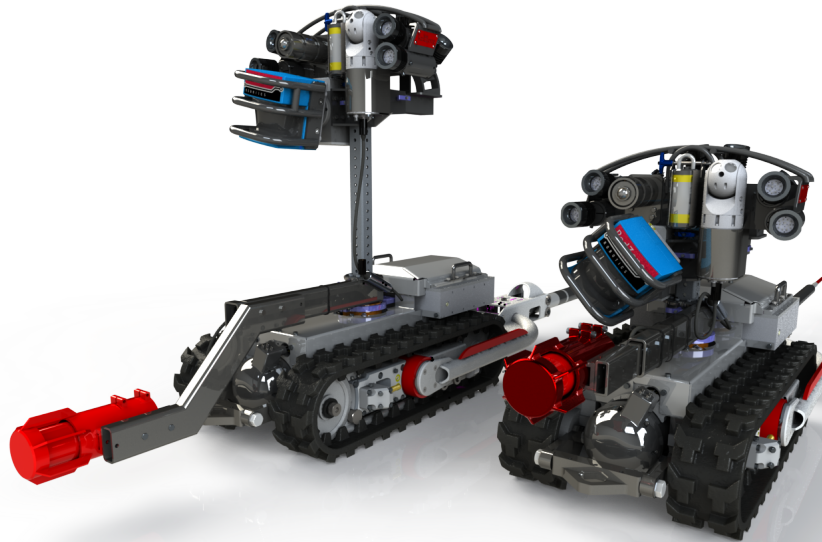


# Large Diameter MSI | Responder

---



## The original, large diameter MSI platform

---

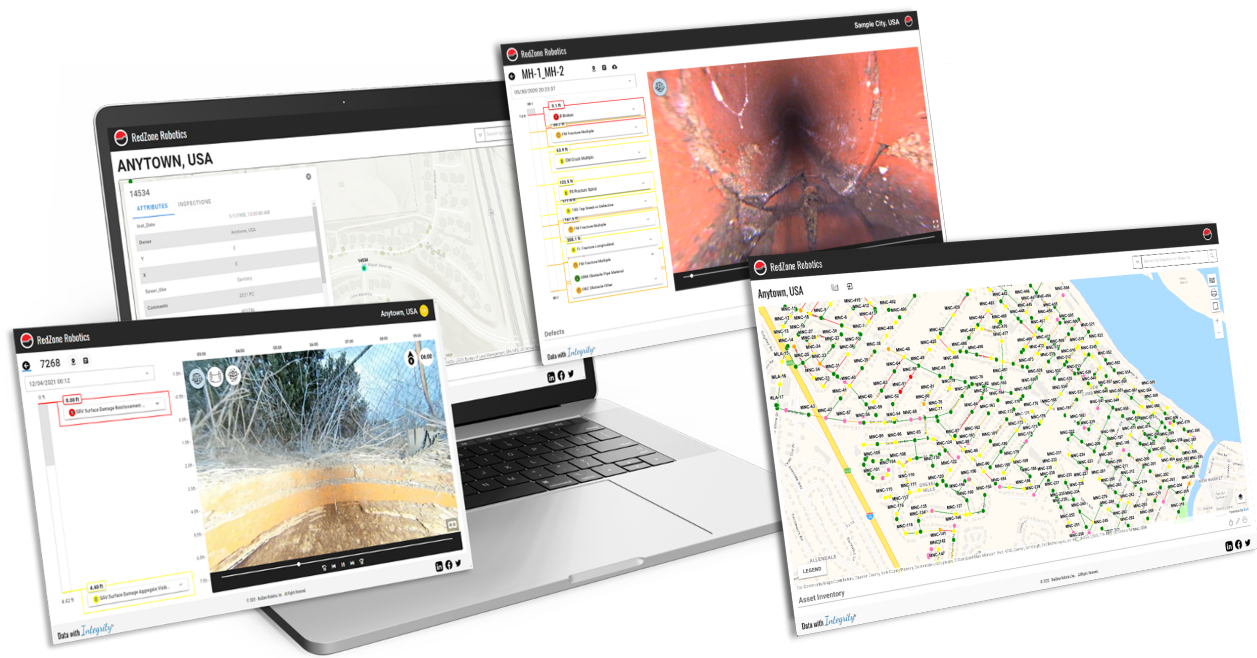
With its stable and rugged frame, Responder® can traverse assets that most conventional units cannot, including **large diameter interceptors and tunnels**. Interceptors are the backbone of any city's sewer infrastructure, and are the most expensive to clean, maintain, and rehabilitate. They also present the highest consequence of failure within any system, which is why they demand proactive maintenance and management.

The MSI data gathered by Responder® quantifies critical problems like **corrosion and debris levels that traditional, visual-only CCTV inspection cannot detect**, providing you the information needed to keep your system in working order.



**Responder® collects large diameter MSI pipe data and imagery you never thought possible.**

With it's "go anywhere, do anything" frame, Responder accesses areas other inspection units can't. See every inch of your pipe with crystal clear imagery and the most robust MSI data available.



## Why Responder®?

Designed for **large diameter interceptors and tunnels**, Responder goes where no other inspection equipment can.

### 1. Powerfully built for the toughest locations

Responder's **stable, tracked platform** allows it to navigate even the toughest locations without issue, **including assets that are completely full of water**.

### 2. The “go anywhere” inspection tool that saves you time and money

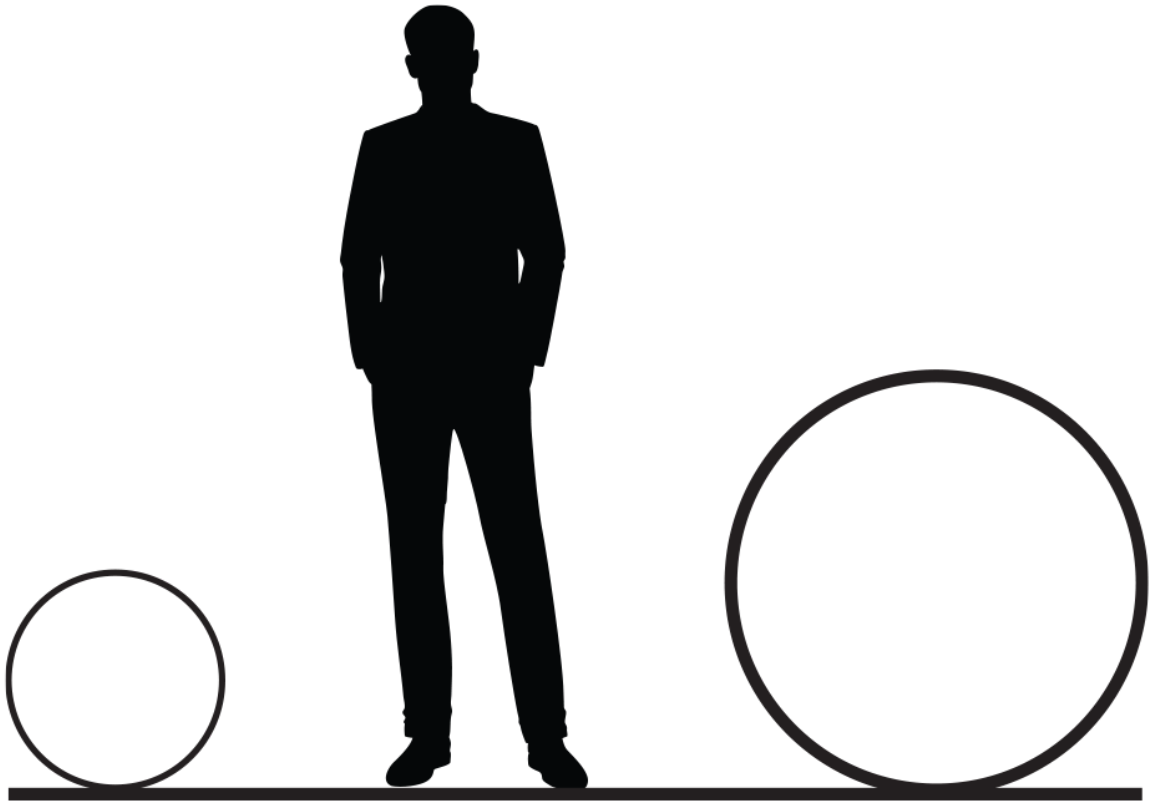
The information collected with Responder requires **no costly by-passing, shutdowns, or manned entry** and ensures that municipalities are not only collecting the best information available, but **drastically cutting expenses and ensuring the safety** of their workers.

### 3. MSI data

Responder's robust design incorporates on-board hydraulic capabilities, 3D scanning LiDAR, sonar, high resolution CCTV, gas, and temperature sensors that can **collect information on pipe condition in even the most demanding environments**.

### 4. Comprehensive reporting

Responder's data provides you with a thorough analysis of your pipes – **premium bend radius analysis, laser/sonar topographical mapping, accurate corrosion and debris mapping** – just to name a few.



## Pipe Size

---

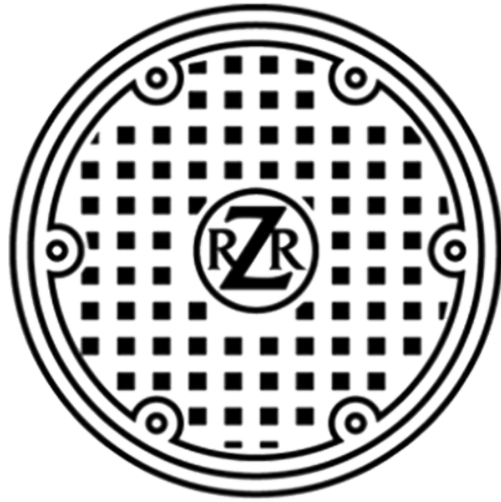
36in – 240in (915mm – 6000mm)



## Water Level

---

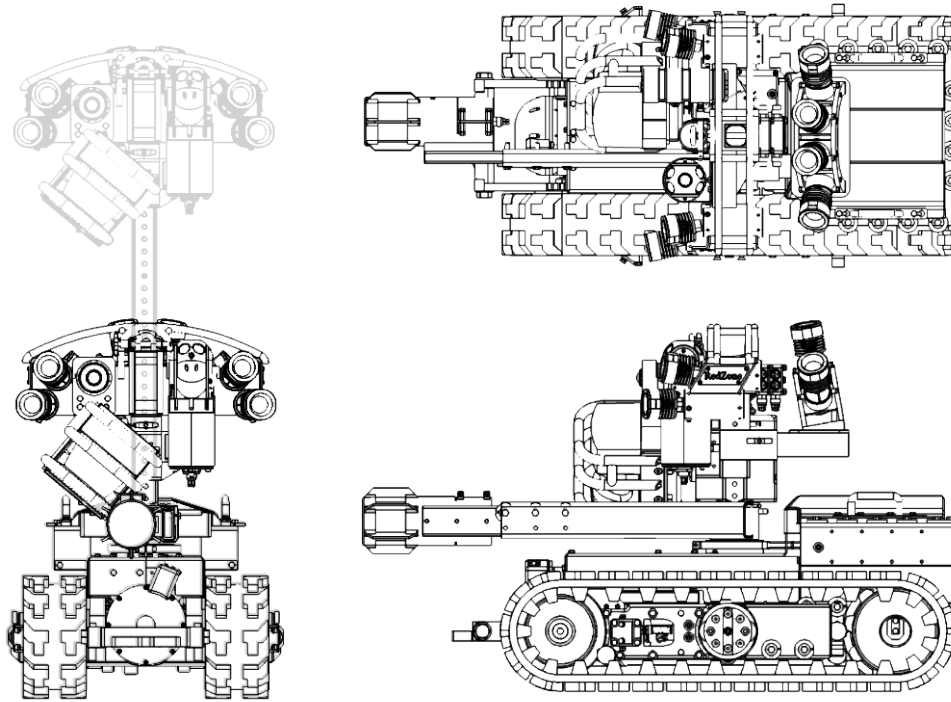
0 – Full



## Access Info

---

24in (609.6mm)



▼ Sensors

3D LIDAR, Sonar, CCTV – Virtual pan, tilt, and zoom, Gas, Temperature

▼ Parameters

**Transportation:** Hydraulic tracked crawler

**Pipe Size:** 36-240 in (915-6000 mm)

**Min. Flow:** 0 in (0 mm)

**Min. Air Gap:** 0 in (0 mm)

**Control:** Real-time control/feedback

▼ Deliverables

Corrosion, Debris, Alignment, Flow Height, Pipe Size, Ovality, Virtual Mandrel, Gas, Temperature