

[SOLUTIONS](#)[PRODUCTS](#)[CASE STUDIES](#)[ABOUT](#)[APPLICATORS](#)[CONTACT](#)[APPLICATOR LOGIN](#)[BLOG](#)[CASE STUDIES](#) / [WASTEWATER](#)

# TOLL GATE SEWER REPAIR

## ONE-YEAR INSPECTION REVEALS GREAT RESULTS IN MANHOLE REHABILITATION PROJECT

**CLIENT TYPE****MUNICIPAL****MARKET****WASTEWATER****LOCATION****WARWICK, RI****AT A GLANCE****BRICK AND CONCRETE MANHOLES****I&I****SEWER STRUCTURES****SCHEDULED SHUTDOWNS****PRODUCTS USED****301-14 HIGH PERFORMANCE EPOXY**

In Warwick, Rhode Island, the public school district identified a need to rehabilitate 13 concrete and brick sewer structures. The critical challenge was maintaining operations while being repaired.

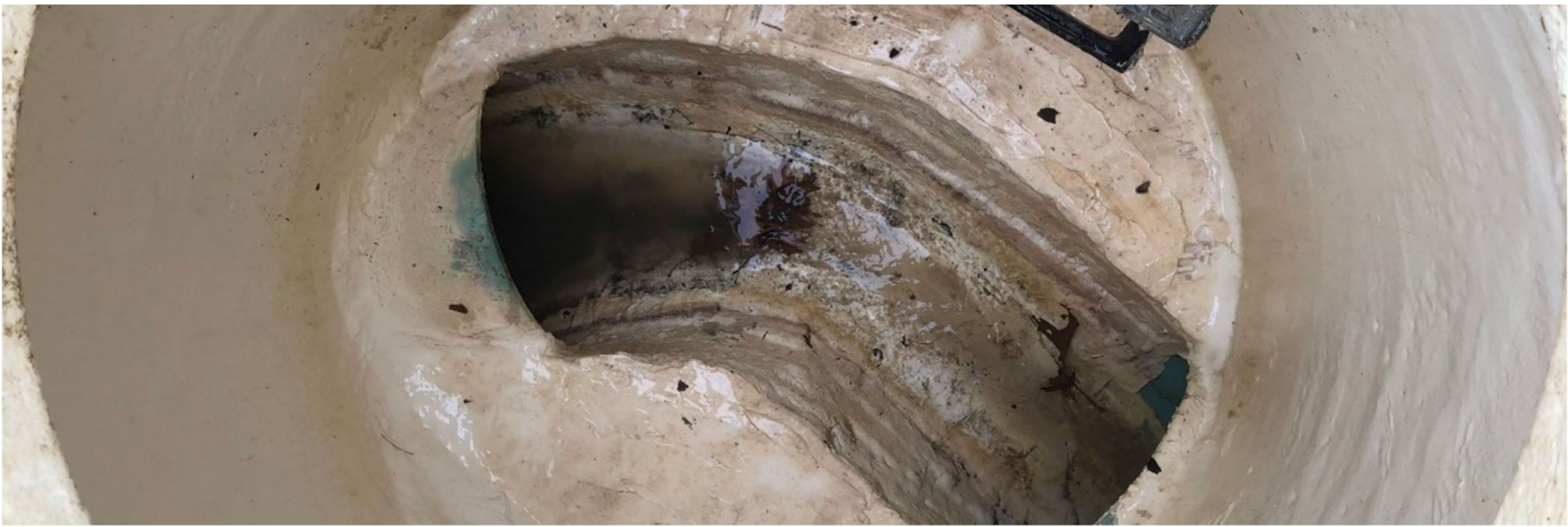
Warren Environmental's 100% solids epoxy coating system was specified, and our approved applicator, A&W Coatings, was awarded the job. The manholes remained in operation while the project was completed. A&W internally bypassed the system utilizing flow-through plugs and was able to work in live-flow conditions. After the team prepared the surfaces through high-pressure water blasting, they coated the structures with a minimum of 250 mils of epoxy, with some requiring as much as 375 mils based on the deterioration. All interior surfaces were coated, including the bench and the invert.

The project was completed in April 2019 and was inspected a year later. The inspection team pressure-washed the structures and then performed multiple pull tests. All the manholes were in great condition, with pull test results ranging from 730 to 1,422 psi.

### PHOTOS







[← BACK TO CASE STUDIES](#)



[SOLUTIONS](#) [PRODUCTS](#) [CASE STUDIES](#) [ABOUT](#) [BLOG](#) [CONTACT](#)

1596 Fulenwider Rd, Gainesville, GA 30507 **PH:** 508-947-8539

SUBSCRIBE TO OUR NEWSLETTER FOR NEWS,  
EVENTS, AND INDUSTRY UPDATES

Email address

>



[Terms and conditions](#) [Privacy policy](#)

© 2025 Warren Environmental