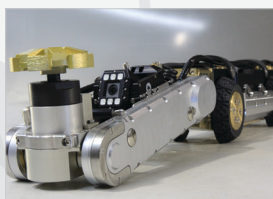
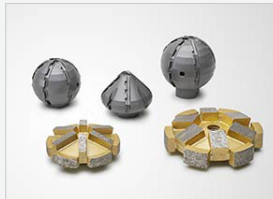
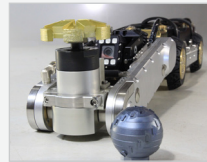
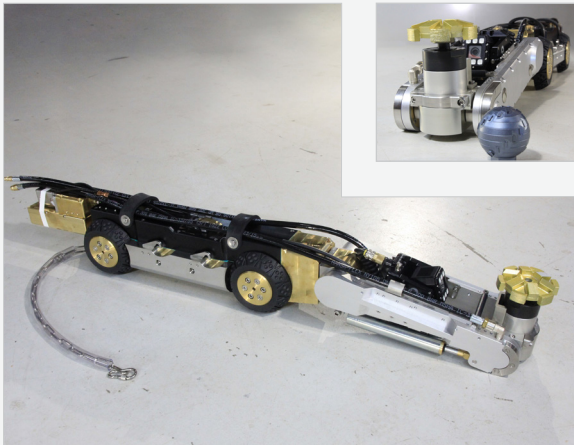


Talpa 2060



Multi-Purpose Pipeline Rehab Sewer Robot

DESCRIPTION

The Talpa FSR 2060 Robot is designed for maximum performance within pipes ranging from 8-24 in. | 200-600mm in diameter. This incredibly powerful robot is stable, sturdy, and versatile within the sewer pipes, and is equipped with axle extenders and additional weights. No additional bracing or securing for milling work is required. The Talpa 2060 delivers fast and efficient pipe cleaning and repair solutions and can tilt more than 45° on it's longitudinal axis without falling over.

FEATURES AND BENEFITS

- For 8-24 in. | 200-600mm Pipe
- Air-Driven
- Rugged and Durable
- USA Service and Support
- Interchangeable Attachments
- High-Resolution Camera
- Integrates with Most CCTV Systems

TECHNICAL DATA

- Length without connector: 35.5 in. | 900mm
- Width: 4.9 in. | 150mm
- Height: 5.5 in. | 138mm
- Overall weight: 99-220 lbs. | 45-100 kg
- For pipe diameters: 8-24 in. | 200-600mm
- Robot carriage drive: Four-wheel drive
- Hydraulic pressure: 870-1160 psi | 60-80 bar

APPLICATION SECTORS

- Trenchless partial rehab of sewer lines
- Accessible I.D. range 8-24 in. | 200-600mm
- Rehab of lateral connections with lined or hat seals
- Localized TV inspection of main lines and laterals



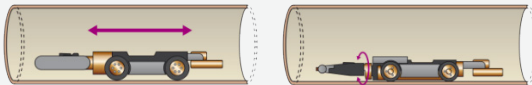
ROBOT CAPABILITY OVERVIEW

- Milling of concrete, ceramics, organic substances, plastics
- Abrasive cutting: cut out protruding obstacles
- Cleaning with specialized brushes, high-pressure jetters
- Maneuvers and positions lateral connection packers
- Compression plugs for sealing of inoperative lateral lines
- Reinstatement of CIPP

DEGREES OF FREEDOM

The Talpa 2060 Robot has a high degree of free mobility. It is equipped to reach all areas within the pipe thanks to multiple degrees of freedom.

1. Moving the robot carriage forwards and backwards
2. Orbiting the head of the robot 200° to each side
3. Hydraulically raising and lowering the access arm, swivels up / down, clockwise / counterclockwise
4. Endlessly rotating the tooling mount by 360°
5. Camera swivels 270° (+ / - 135°)



ROBOTIC CAMERA OPTICS

The MiNa Camera: Sewer Camera, Compact Version

- Image sensor: 1/3 in. Sony Super HAD CCD II
- Resolution: 600 TV lines, PAL or NTSC
- Minimum illumination: 2.0 Lux (daylight mode, real-time color mode)
- Swivel feature: +/- 135° (backward view), wear-resistant friction clutch
- Watertight: pressure monitoring to 5 psi | 0.3 bar with indicator light
- Quick mount: assembly to the robot with a few steps

System Components & Accessories

TOOLING / ATTACHMENTS

- Piranha heads: conical or ball-shaped, small/large each
- Mushroom head: small/large each
- Compressed air-powered chisel
- Compressed air-powered disc grinders
- High-pressure jet nozzles, cup and disc brushes
- Powered wrenches for 4/5/6 compression plugs

WHEELS

- Carbide-surfaced wheels, conical with solder-bonded carbide texturing
- Carbide wheels: 5.91 in. | 150mm diameter, with increased ground clearance
- Large Diameter Solid Rubber tires for 16-24 in. | 400-600mm pipe

AXLE EXTENDERS

- 8 in. | 203mm extender - widens wheel base, for 7.75 in. | 197mm and up
- 10 in. | 254mm extender - widens wheel base, for 9.75 in. | 248mm and up
- 12 in. | 305mm extender - widens wheel base, for 11.75 in. | 45mm
- Disc sets available in widths of 1/1.15/2 in. | 25/29/51mm
- For line diameters 10 in., 12 in., 14-16 in., 20-24 in. | 254mm, 305mm, 356-154mm, 508-610mm

DIGITAL CONTROL MODEL

- Controls robot functions
- Power supply: 110 V or 230 V
- NTSC and PAL systems
- Control unit with serial interface: alphanumeric display of date, time and robot position (ft or m)
- Operating panel with two joysticks, options: keyboard, flat screen
- Available as 19 in. | 483mm stationary rack module or portable module in aluminum carrying case with integrated screen

AUTOMATIC CABLE DRUM

- Electrically powered cable feed with self-levelling winding, cable length: 660 ft., operates from 110 V or 230 V power
- Output and retrieval: automatic or manual, winding tension and speed: closed or open-loop control
- Cable length reading accurate to nearest .50 in | 13mm, with digital display reset function for positioning to defined zero points