



## MONOFORM PLUS™ CASE STUDY

Restoring Structurally Failing Manholes on Verge of Collapse with Patented Proprietary Repair Solution



### EXECUTIVE SUMMARY:

Three city-owned manholes in danger of collapse on privately held rail spur. Collapse would cause significant damage to production at facility. Significant threat to safety of plant and rail personnel

### CHALLENGES:

#### MANHOLE #1:

- Manhole base and flow line corroded causing loss of backfill severe sink hole
- Between two active track line
- Severe structural degradation caused by high-level H2S

#### MANHOLE #2:

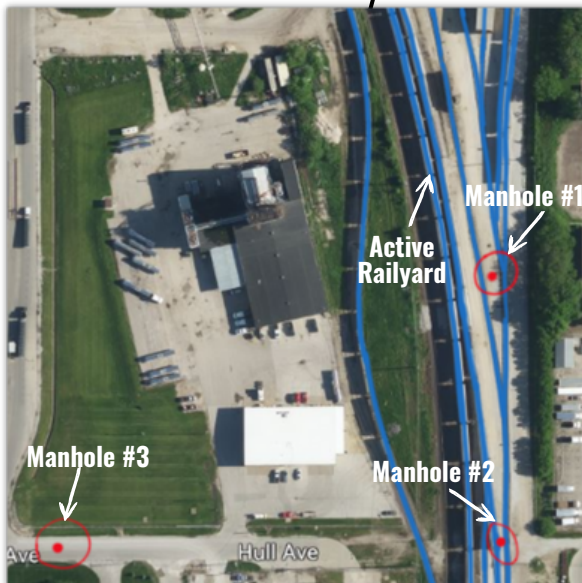
- Caved in at base of manhole causing massive sink hole undermining railroad grade
- In between & under active railroad spur
- Severe degradation due to H2S

#### MANHOLE #3:

- Caved in at base of manhole
- On busy semi truck route
- Neglected for years
- Severe deterioration caused by high-level H2S



### AERIAL VIEW OF SITE MAP



### OUR SOLUTION: MONOFORM PLUS™

- HK's patent pending manhole rehab solution
- 100% Structural
- 100% Corrosion-Resistant
- No-Dig Trenchless Technology
- Combination of the original Monoform™ process; fully structural trenchless manhole rehabilitation process, and Agru's HPDE Ultra Grip liner.
- HDPE Ultra-Grip interior liner provides corrosion protection from MIC (Microbiologically Induced Corrosion)
- Eliminates both exfiltration and infiltration



## MONOFORM PLUS™ CASE STUDY

Restoring Structurally Failing Manholes on Verge of Collapse with Patented Proprietary Repair Solution



HK responded by providing the City and a soybean processing plant with a cost-effective resolution in a timely manner during a critical situation. Thanks to the HK leadership team and performance of the Monoform Plus™ Service technicians, a potentially catastrophic problem was avoided. Team Structure's efforts on this project likely averted a plant shutdown.

**MATT HUSTON**  
 Business Development Director  
 of HK Structure Rehab

### THE MONOFORM PLUS™ PROCESS



### BEFORE & AFTER MONOFORM PLUS™

MANHOLE #1



MANHOLE #2



MANHOLE #3

