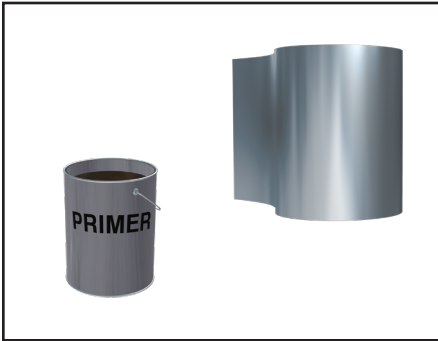




JOINT SEAL™

INSTALLATION GUIDE

System Components



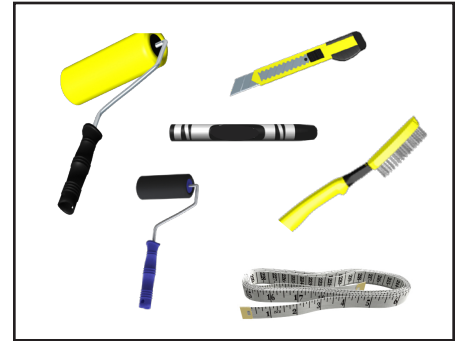
CCI Joint Seal™ is shipped in bulk rolls of varying widths. The adhesive is protected from contamination by an inner liner. Primer is sold separately.

Storage & Safety Guidelines

To ensure maximum performance, store CCI products in a dry, ventilated area. Keep products sealed in original cartons and avoid exposure to direct sunlight, rain, snow, dust or other adverse environmental elements. Avoid prolonged storage at temperatures above 95°F (35°C) or below -4°F (-20°C). Product installation should be done in accordance with local health and safety regulations.

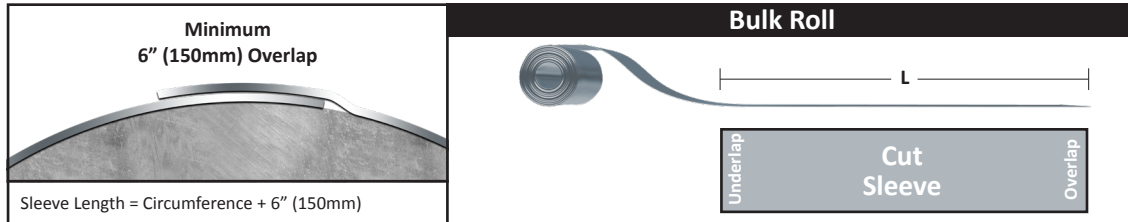
These installation instructions are intended as a guide for standard products. Consult your CCI representative for specific projects or unique applications.

Equipment List



Knife, roller, wire brush, paint brush or roller, tape measure, marker & standard jobsite equipment (gloves, goggles, hard hat, etc.)

Product Preparation Guidelines

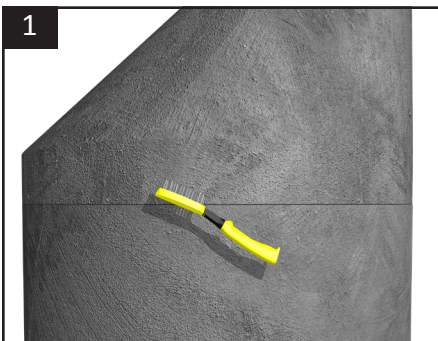


As a guideline, cut the required length of material from the bulk roll as follows:

$$L = \text{Circumference of Structure} + \text{Overlap Dimension}$$

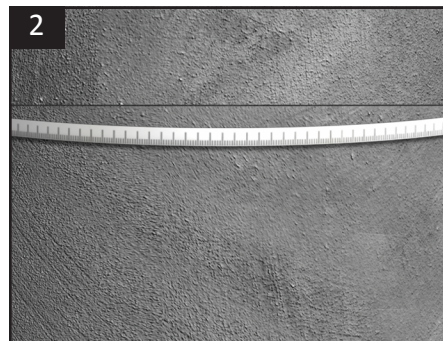
Ensure that the sleeve is not damaged or contaminated.

Surface Preparation



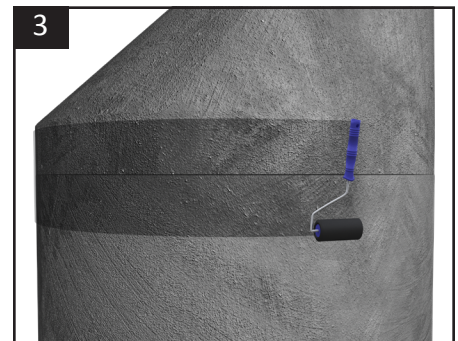
1 Ensure all surfaces which the sleeve will be applied to are clean, dry and free of foreign objects and sharp edges.

Sleeve Sizing



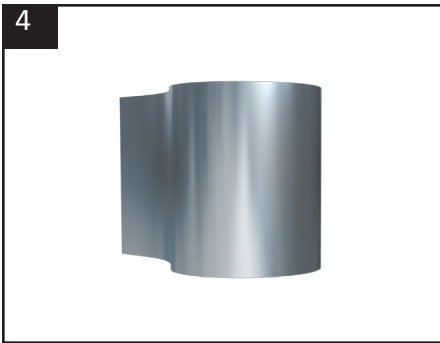
2 Joint Seal™ should be sized to extend 3" above & below the upper and lower joints of the cone section, grade rings and frame. As a guide, make a series of marks around the manhole where the bottom of the sleeve will be. Determine the layflat length of the sleeve by measuring the circumference of the manhole structure at the marks and add the overlap dimension (6" minimum).

Primer Application



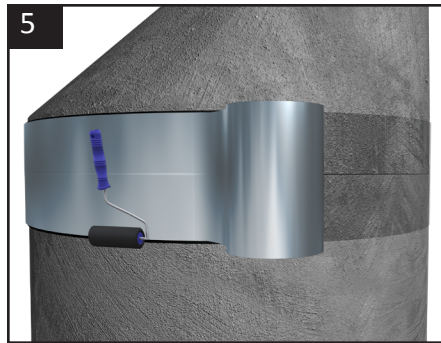
3 Apply Primer to the application surfaces (i.e. brick, concrete, etc.) Wait until the primer is slightly tacky to touch before proceeding. This will take 10-15 min. depending on temperature & humidity conditions.

Sleeve Preparation



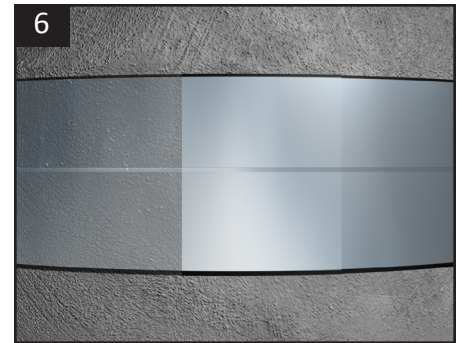
Roll up the cut sleeve ensuring the release liner is still on the adhesive back. Pro Tip: Rolling the sleeve with the liner facing out can make removing the liner during application easier.

Sleeve Wrapping



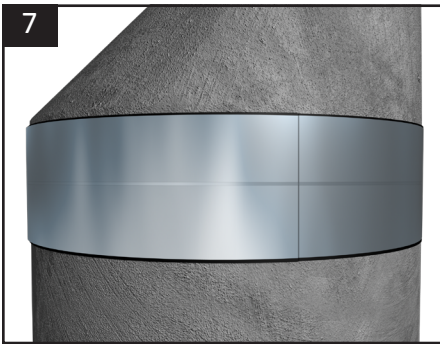
Remove ~ 6" of the release liner from the sleeve. Using the perimeter marks as the guide, begin wrapping the sleeve around the manhole while gradually removing the release liner. Using rubber roller, apply pressure to the sleeve as it is applied to the joint.

Sleeve Overlap



At the overlap, ensure that the top and bottom edges of the sleeve are uniformly aligned.

Inspection



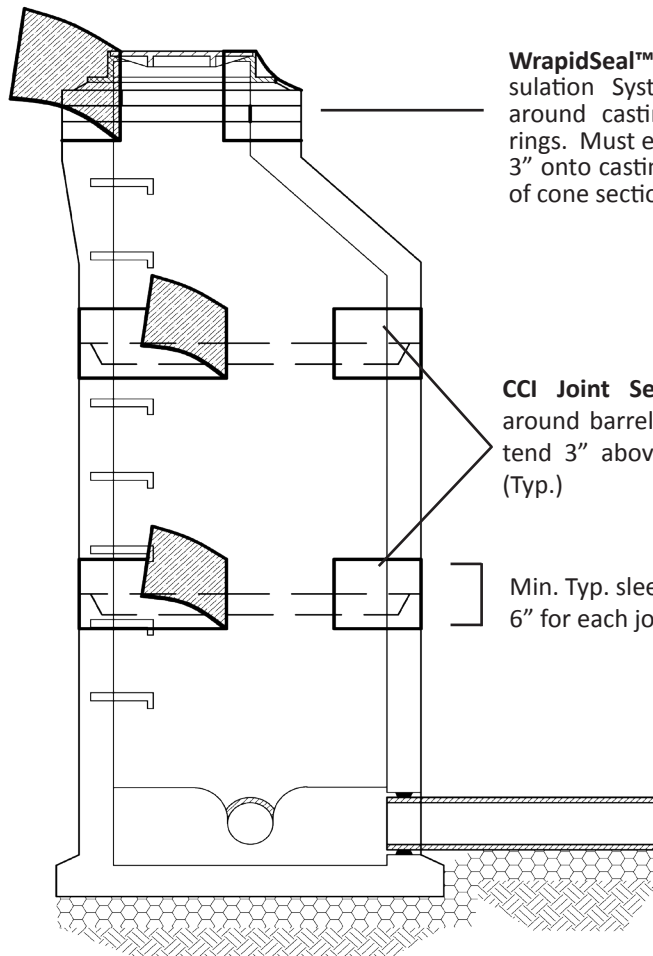
Visually inspect the installed sleeve for the following:

- Sleeve is in full contact with the structure
- No cracks or holes in the sleeve backing

Backfilling Guidelines

After application is complete, immediate backfilling is acceptable. To prevent damage to the sleeve, use selected backfill material, (no sharp stones or large particles), otherwise an extruded polyethylene mesh or other suitable shield should be used. Please contact CCI Piping Systems or your local Manufacturer's Representative when considering use of CCI Joint Seal™ on above grade structural applications.

Suggested Application



WrapidSeal™ Manhole Encapsulation System fully conforms around casting and adjustment rings. Must extend a minimum of 3" onto casting and 3" below top of cone section with a 6" overlap.

CCI Joint Seal™ wraps tightly around barrel joints. Seal to extend 3" above and below joint. (Typ.)

Min. Typ. sleeve width 6" for each joint

CCI PIPING SYSTEMS, LLC

1026 O'Neal Drive • Breaux Bridge, LA 70517

ccipipe.com • sales@ccipipe.com

337.332.5808 • 800.867.2772