



S.S.I. INTERNAL UNI-BAND

Prevents Infiltration and Siltation in Sanitary Manholes and Catch Basins

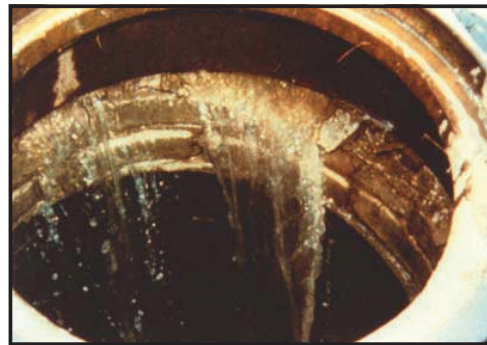
OUR SOLUTION



The **NEW S.S.I. INTERNAL UNI-BAND** is an inexpensive and permanent method of internally sealing the grade adjustment ring area of a manhole. The seal has foam backing to ensure a water tight seal over the rough/irregular surface of the structure, and stainless steel bands at the top and bottom with expansion bolts, allowing for precise adjustment to create a secure fit. To accommodate ground movement, **S.S.I. INTERNAL UNI-BAND'S** high quality Polyisoprene Rubber has 637% elongation. **S.S.I. INTERNAL UNI-BAND** saves taxpayers' money by not having to treat infiltrating water and by avoiding expensive repair and maintenance costs.

TO YOUR PROBLEM

**The New S.S.I.
Internal Uni-band**



Sealing Systems, Inc.

9350 County Road 19 ♦ Loretto, MN 55357 ♦ 763-478-2057 ♦ 800-478-2054 ♦ Fax 763-478-8868 ♦ www.infi-shield.com

S.S.I. INTERNAL UNI-BAND

APPLICATION STANDARDS & TECHNICAL DATA TEST RESULTS

<u>PROPERTY</u>	<u>ASTM TEST METHOD</u>	<u>REQUIREMENTS</u>	<u>TEST RESULTS</u>
HARDNESS	D2240-05	45	45
TENSILE	D412-06a	1200 PSI/MIN	1964 PSI
ELONGATION	D412-06a	350 % MIN	637 %
OZONE RESISTANCE	D1149-07 70 HRS @ 40° C & 50 mPA		PASS
COMPRESSION SET	D395 22 HRS @ 70°C	25% MAX	16.8%
HEAT AGED HARDNESS	D865-99 96 HRS @ 70°C	No Requirements	+5
HEAT AGED TENSILE	D865-99 96 HRS @ 70°C	No Requirements	+5
HEAT AGED ELONGATION	D573 70 HRS @ 100°C	No Requirements	-8
WATER RESISTANCE	D471-06 48 HRS @ 70°C	VOLUME CHANGE +10% MAX	3.7%
LOW TEMPERATURE BRITTLENESS	D2137-05 (3 min. @ -40°C)	NO CRACK ON IMPACT	PASS

SPECIFICATIONS: ASTM C923

PROPERTIES OF STAINLESS STEEL BANDS: 16 GAUGE 304 STAINLESS STEEL

PROPERTIES OF INFINITE EXPANSION DEVICE: 304 STAINLESS STEEL

FOAM SEAL: Closed Cell Polymer Foam (Neoprene/EPDM/SBR Sponge)



The **S.S.I. INTERNAL UNI-BAND** can be used on existing and new construction manholes or catch basins. A clean surface is necessary but no special tools are required for installation.



Sealing Systems, Inc.

9350 County Road 19. ♦ Loretto, MN 55357 ♦ 763-478-2057 ♦ 800-478-2054 ♦ Fax 763-478-8868 ♦ www.infi-shield.com